

studioart

CATALOGO GENERALE | GENERAL CATALOGUE

2023

INDICE INDEX

4	LEATHERWALL	65	Losange	109	WALL TREATMENT
5	Lapis	69	Semitondo		
9	Terra	73	Hyperreal	111	LEATHER ACCESSORIES
11	Neo	75	Lady N	112	Pezzara Rug
15	Bon Ton	77	Ranella	114	Cuscini ricamo
19	Pop	79	The Core Line		
23	Bijou	83	Mosaico	116	DESIGNERS
27	Duo	87	Quadrato Special		
33	Woods	91	Rettangolo Special	119	SCHEDE TECNICHE TECHNICAL SHEETS
37	Frammenti	95	Trapezio		
41	Lumen	99	Pattern 2 / Luxury		
43	Kaleido	101	Pattern 6		
47	Neige	103	Pattern 8		
49	Le Mans	105	Pattern 9		
53	Ryder	107	Pattern 12		
57	Continental				
61	Palisades				

STUDIOART

IT / Studioart vanta radici profonde nella produzione e lavorazione delle pelli, grazie alle aziende di proprietà che da più di 50 anni sono il fiore all'occhiello del distretto internazionale della concia.

La profonda esperienza manifatturiera, l'innovazione nelle tecniche e tecnologie, l'analisi dei trends e dei materiali sono sempre stati i fattori di successo in questo duraturo business di famiglia.

Da qui la decisione di unire il prezioso know-how nella lavorazione delle pelli con la spiccata sensibilità estetica nell'interior design.

Con Studioart, la pelle diviene protagonista di soluzioni d'arredo uniche.

L'ampia selezione di pelli e rivestimenti murali e l'attenzione al dettaglio hanno reso Studioart un punto di riferimento nel panorama del design di interni.

EN / Studioart has deep roots in leather processing thanks to the family-owned companies that for more than 50 years have become a point of reference in the international tanning district.

The extensive craftsmanship experience combined with creativity, ongoing technological innovation, foresight and commitment to a pioneering spirit have been the key success factors of the long family business. This has led to the combination of the great know-how in leather processing with the marked refined taste in interior design.

With Studioart leather becomes the protagonist of interior design with unique furnishing solutions. The wide selection of leathers and wall covering proposals and the outmost care in delivering high-end products have made Studioart one of the key players in the interior decoration industry.

LEATHERWALL

IT / Con Leatherwall di Studioart, la pelle diventa protagonista nel mondo dell'interior design, aprendo la strada ad un nuovo modo di concepire l'architettura degli interni e di arredare gli spazi. Soluzioni di rivestimento uniche, in pregiati pellami cuciti su misura e minuziosamente lavorati con sapienza artigianale, si declinano in una molteplicità di proposte per soddisfare le più diverse esigenze di progettazione e di decorazione.

L'unicità di ogni collezione Leatherwall si esprime nella versatilità delle palette di colori, dei pattern e delle dimensioni, così come nelle sfumature naturali delle pelli e nella matericità delle texture. Rivestimenti che si traducono in giochi cromatici e di volumi danno vita a risultati decorativi eterogenei e personalizzati.

Tutte le pelli Studioart derivano da materie prime d'alta qualità che sono conciate e lavorate attraverso una produzione interamente Made in Italy nel rispetto dell'ambiente.

EN / With Studioart's Leatherwall, leather becomes the protagonist of interior design, opening up the way to a new concept of architecture for interiors and space décor. Unique wall covering solutions marry exquisite materials with an extensive Italian craftsmanship to satisfy the most diverse needs of style and decoration.

The uniqueness of each Leatherwall collection is conveyed through an extraordinary variety of colour palettes and patterns, along with exclusive leathers, textures, and tailor-made stitching, to decorate interiors with personalised luxury. A relentless stylistic research is the ground of fashionable wall covering solutions, opening up the possibilities for a wide range of space interpretations.

All Studioart leathers derive from premium raw materials, which are tanned and processed with a thoroughly Made in Italy production in respect of the environment.

Lapis

— design: Massimo Brancati

IT / LAPIS La pietra irregolare crea un contrasto solo apparente con la morbidezza della pelle, mettendo in risalto la naturalità della materia e celebrando la bellezza di ciascun elemento. Le finiture, volutamente irregolari del rivestimento murale in pelle e pietra, creano diversi volumi ed effetti tridimensionali sulla parete, esaltandone il potere decorativo.

EN / LAPIS The combination of natural elements, such as the leather and stone of the wall covering, contributes to glorify the beauty of the different materials. The leather tile and stone's irregular finishes of the Lapis wall covering create different volumes and three-dimensional effects on the surface, enhancing the walls' decorative potential.







LAPIS: Velluto Chic greige



Terra

— design: Massimo Brancati

IT/ TERRA Prendendo spunto dalle curve di livello terrestri, le cuciture artigianali disegnano sulla parete linee continue, creando pareti morbide e sofisticate. La raffinatezza del disegno cucito a mano esalta il savoir-faire artigianale, donando un tocco ricercato e sartoriale e rendendo il rivestimento murale un elemento decorativo estremamente pregiato. La collezione Terra è proposta in due varianti di pellame delle Collezioni Velluto Chic e Salar, caratterizzate da un aspetto vissuto e naturale.

EN/ TERRA Taking inspiration from the Earth's contour lines, the handmade stitching draw irregular and curved lines, creating textured and elegant surfaces. The sophisticated stitching gives a sartorial and elegant allure to the surface, making this wall covering a refined decorative element. The Terra collection is proposed in two different leather qualities, Velluto Chic and Salar, where their main feature is a vintage and natural look.



STUDIOART.IT /
TERRA

SCHEDA TECNICA/
TECHNICAL SHEET

INDICE/
INDEX

sopra / above: TERRA - Velluto Chic olive brown
destra / right: TERRA - Salar cuoio



Neo

— design: Massimo Brancati

IT / NEO Il processo manuale di decolorazione della pelle dona al rivestimento murale un aspetto vissuto, caratterizzando l'area living con stile. La lavorazione superficiale del rivestimento murale Neo richiama un aspetto vissuto, esaltando l'imperfezione come naturale bellezza del pellame.

EN / NEO The handmade discolouration of the Neo leather wall covering gives a natural allure to the leather wall covering, enhancing the imperfection as the leather's natural beauty and characterizing the interiors with a unique style.









Bon Ton

— design: Massimo Brancati

IT / BON TON Colori pastello e cuciture tono su tono rendono questo prodotto emblema di ricercatezza ed eleganza. L'alternanza di finiture piane e bombate disegna interessanti giochi di luce, per un delicato effetto tridimensionale che dona preziosità all'ambiente.

EN / BON TON Pastel shades and tone on tone stitching make this product a symbol of refinement and elegance. The alternation of flat and padded finishes creates interesting light and shade effects that give a delicate three-dimensional preciousness to the interior.







Pop

— design: Massimo Brancati

IT / POP Caratterizzato da una selezione di colori densi e brillanti con originali cuciture a contrasto, Pop richiama un'interessante ripetizione a scacchiera. Il risultato è una parete estremamente decorativa, capace di catturare l'attenzione e abbinarsi perfettamente agli ambienti in stile minimal.

EN / POP Designed with a palette of bright and intense tones and original stitching in contrasting colours, Pop recalls an interesting chessboard pattern. The result is a highly decorative feature wall in leather that finds great applications in minimal interiors.







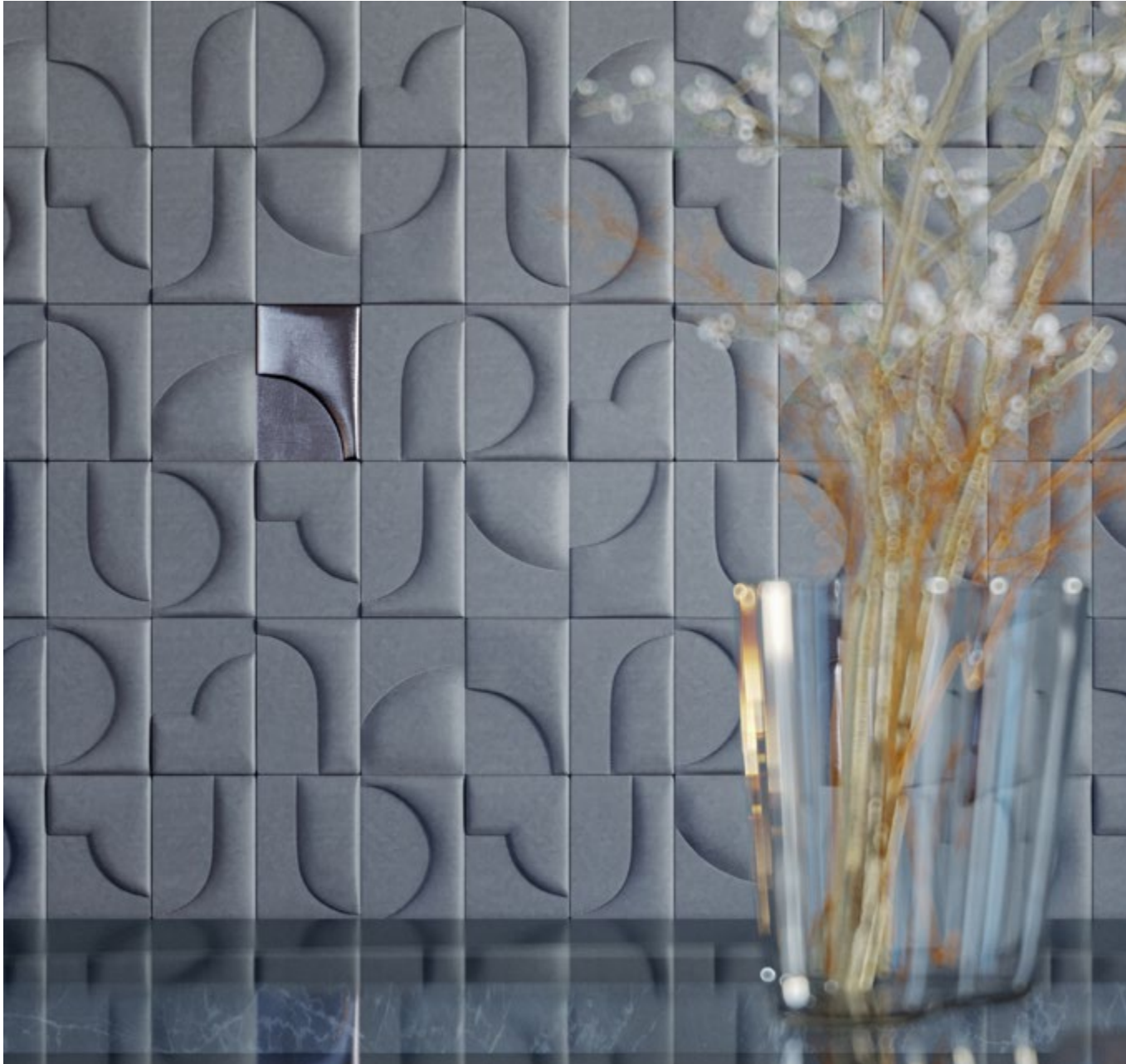
Bijou

— design: Massimo Brancati

IT / BIJOU Morbide al tatto e impreziosite da dettagli metallizzati, le piastrelle in pelle Bijou si presentano con una raffinatezza senza tempo. Le piastrelle metallizzate, disposte in ordine apparentemente casuale, richiamano la preziosità di un gioiello, decorando gli ambienti con gusto ed eleganza.

EN / BIJOU Soft to the touch and enriched with metallic details, Bijou leather tiles have an intrinsic and timeless beauty. The apparently casual arrangement of the metallic tiles recalls the preciousness of an old jewel, and it enhances interiors with elegance and refinement.







Duo

— design: Massimo Brancati

IT / DUO è un elegante rivestimento murale realizzato con due strati di pelle sovrapposti che risultano in affascinanti geometrie intagliate sulla superficie. L'abbinamento di diverse tipologie di pelle arricchisce la parete, creando accattivanti giochi di luce e contrasti di colore.

EN / DUO is an innovative leather wall covering made of two layers of leather that result in fascinating triangular geometries cut on the surface. The combination of different types of leathers enriches the surface and creates captivating sparkling and matt, or contrasting colour, effects.







sinistra / left: DUO Layout B - Palette 7:
City cenere / Cipria sand
destra / right: DUO Layout A - Palette 1:
City nuvola / Watersuede Chic 412





sinistra e sopra / left and above: DUO Layout A -
Palette 3: City voronof / Watersuede Chic sage
destra / right: DUO Layout A - Palette 4:
City pastorius / Watersuede Chic ivory



Woods

— design: Massimo Brancati

IT / Prendendo spunto dalle doghe di legno, Woods introduce una nuova tridimensionalità alla piastrella in pelle, che diventa al contempo piana e bombata. La superficie della piastrella diventa protagonista di giochi ottici sempre mutevoli che presentano le potenzialità della pelle in tutte le sue forme, proponendo una collezione adatta a tutte le tipologie di ambienti.

EN / Woods introduces a new three-dimensionality to the leather tile, which is padded and flat at the same time, getting its inspiration from wood staves. Ever-changing optical effects on the tile surface explore the expressive potential of leather with a collection that can be suitable and enhance any type of interior.







sinistra e sopra / left and above:
WOODS Layout 1 - Salar blu
destra / right: WOODS Layout 1 -
City pancake



Frammenti

— design: Massimo Brancati

IT / Frammenti ricerca l'irregolarità con un pattern apparentemente casuale in cui la modularità è riconducibile a sei forme diverse. Sagome scomposte e ricomposte esplorano le potenzialità espressive della pelle attraverso una collezione che mescola abilmente forme, fantasie cromatiche e pellami diversi.

EN / Frammenti shows irregularity through an apparently random pattern made of six different shapes. Ever-changing shapes explore the full potential of leather presenting a collection that expertly mixes and matches different leathers, forms, and chromatic proposals.









destra / right: FRAMMENTI Layout 3 -
City crema
piano e bombato / flat and padded

PAGINA SINISTRA / LEFT PAGE
sinistra/ left: FRAMMENTI Layout 1 -
Tesoro oro piano / flat
destra / right: FRAMMENTI Layout 2 -
City shell bombato / padded

Lumen

— design: Massimo Brancati

IT/ Prendendo spunto dalle onde luminose, Lumen coniuga raffinatezza con una sapiente ricerca di materiali e processi produttivi innovativi. Una delicata cucitura delinea le bombature armoniose sulla piastrella regalando alle pareti un tocco sartoriale.

EN/ Taking its inspiration from light waves, Lumen's innovative materials and production processes are extremely elegant. A light stitching outlines the charming textures of the tiles, whilst providing a touch of couture to the wall decoration.





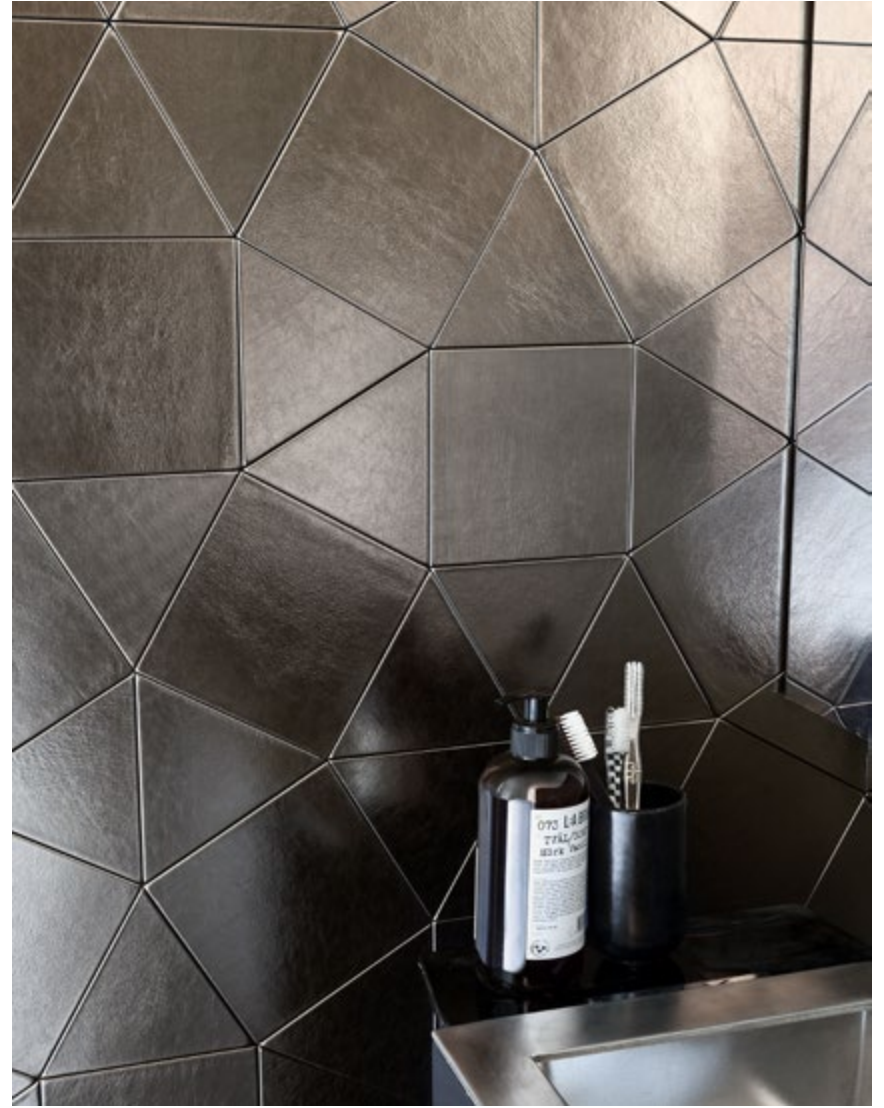
Kaleido

— design: Massimo Brancati

IT / Come un caleidoscopio, Kaleido gioca con forme e colori per dare origine a immagini sempre nuove. Forme semplici si combinano creando profondità, geometria e movimento. Sagome scomposte e ricomposte esplorano le potenzialità espressive della pelle attraverso una collezione che mescola abilmente forme, fantasie cromatiche e pellami diversi.

EN / Like a kaleidoscope, Studioart plays with shapes and colours to conceive a new array of images. Simple shapes combine and create perspective, geometry, and movement. Ever-changing forms explore the expressive potential of leather with a collection that wisely blends shapes, chromatic reveries, and different kinds of leather.







sinistra / left: KALEIDO Layout 1 - Tesoro bronzo
piano / flat
destra / right: KALEIDO Layout 1 - City shell
piano / flat

Neige

— design: Massimo Brancati

IT / Le piastrelle Neige, a forma di rombo, si posano una sull'altra come fiocchi di neve, caratterizzando la parete di texture e grafismi sempre nuovi. Pur esprimendo il massimo potenziale decorativo su parete ampia, Neige ha la giusta flessibilità per creare infinite combinazioni, facilmente adattabili ad ogni dimensione.

EN / The Neige tiles, which are rhombus in shape, lie on each other like snowflakes embellishing walls with new textures and graphics. Maximum decorative potential is achieved through displaying this tile on large walls, whilst also having the flexibility to create infinite tile combinations making it easily adaptable for differing wall surfaces.



Le Mans

— design: Grove Studio

IT / Le Mans richiama l'allineamento delle macchine all'inizio della corsa. Gli inserti metallici si accostano alle piastrelle per creare pattern originali e sempre diversi. Ideato per spazi ampi e ariosi, come le lobby degli hotel, Le Mans trova anche straordinaria applicazione in spazi residenziali, donando un tocco chic a qualsiasi ambiente.

EN / Le Mans is inspired by the diagonal alignment of cars on the track at the start of a race. Metal inserts create striking effects with their arrangement giving surfaces ever-changing patterns. Designed for large spaces, Le Mans can also be used on a smaller scale that gives a stylish addition to an interior.





sinistra / left: LE MANS Layout B - City voronof
inserti in metallo gold / gold metal inserts
destra / right: LE MANS Layout D - Mushroom
fairy inserti in metallo champagne /
champagne metal inserts



Ryder

— design: Grove Studio

IT / Ryder richiama le linee parallele create dalle ruote delle macchine da corsa, creando un sofisticato pattern di piastrelle rettangolari. Texture diversificate e inserti metallici creano motivi armoniosi che decorano le pareti con effetti raffinati. Il contrasto materico tra pelle e metallo è un invito a toccare le superfici.

EN / Ryder recalls the parallel lines of tire treads on racing cars, creating a sophisticated pattern of rectangular tiles. Varying textures and finished metal inserts create designs that decorate walls with a refined effect. The contrast between the warmth of the leather and the coldness of metal creates an interesting invitation to touch the surface.







destra / right: RYDER Layout A - City light grey /
Velluto Chic perla - inserti metallici champagne /
champagne metal inserts

PAGINA SINISTRA / LEFT PAGE
sinistra/ left: RYDER Layout A - City cognac - Velluto
Chic cognac - inserti metallici silver / silver metal inserts
destra / right: RYDER Layout C - Velluto Chic certosino
inserti metallici black / black metal inserts

Continental

— design: Grove Studio

IT / L'emozione di intravedere la bandiera d'arrivo ha influenzato il design di Continental, un pattern sviluppato per dare movimento ed energia agli interior. Finiture matt e metallizzate creano effetti inusuali per decorazioni altamente impattanti e mai scontate.

EN / Continental brings movement and energy to any space. Contrasting matt and metallic textures create unusual effects to dress interiors with patterns that are highly decorative and never obvious.





sinistra / light: CONTINENTAL Layout C
City storm / Velluto Chic inky blue

PAGINA DESTRA / RIGHT PAGE
sinistra/ left: CONTINENTAL Layout A
City polvere / Velluto Chic T. moro



Alvar Aalto

Palisades

— design: Adam Hunter

IT / Nella sua raffinata eleganza, è un prodotto dal forte contenuto innovativo. Grazie ad affinate tecniche di stampa digitale, Palisades ridefinisce il concetto di sfumato nella decorazione di interni. La bellezza senza tempo della pelle è ulteriormente arricchita da sfumature accattivanti e ricercate, diventando la protagonista assoluta in qualsiasi ambientazione.

EN / Palisades is the avant-garde in leather treatment because of its highly innovative content. Thanks to digital printing techniques, Palisades fuses the beauty of leather with the visual allure of an ombre pattern, enhancing its timeless beauty.







sinistra / left: PALISADES Layout C - Palette 3
sopra / above: PALISADES Layout A - Palette 4
destra / right: PALISADES Layout C - Palette Gold



Losange

— design: Giorgia Zanellato

IT / L'ampia gamma di colori e finiture vedono la loro espressività con Losange, dove il rombo è protagonista grazie alla sua forma semplice e versatile. La proposta cucita, nata dalla passione per le lavorazioni artigianali e la profonda esperienza manifatturiera, regala agli ambienti un aspetto fortemente sartoriale.

EN / Losange is a collection where the rhombus, a simple yet versatile shape, enhances the great choice of colours and textures of leathers. The artisanal know-how and dedication have been inspirational for conceiving the stitched option, which gives a haute-couture allure to interiors.



SAVON LIQUIDE
A L'HUILE D'OLIVE
ANIS PATCHOULI
LIQUID SOAP
WITH OLIVE OIL
ANISE PATCHOULI





sinistra / left: LOSANGE Layout 2 - City fard / Luz holmes /
Mushroom fard - piano / flat

sopra / above: LOSANGE Layout 3 - City cielo
bombato cucito / padded stitched

destra / right: LOSANGE Layout 1 - City cielo / Luz geyser / Mushroom cielo
bombato / padded



Semitondo

— design: Giorgia Zanellato

IT / Semitondo nasce dalla passione per le geometrie e da tecniche produttive innovative che uniscono in un unico elemento una sezione piana e bombata. Quadrato e semicerchio convivono armoniosamente all'interno di una stessa piastrella creando eleganti giochi ottici e superfici estremamente raffinate.

EN / Semitondo gets its origin from innovative production techniques and a strong passion for geometric shapes, which result in a tile that is flat and padded at the same time. Squares and semi-circles harmoniously coexist in a unique tile, creating refined chiaroscuros and extremely sophisticated surfaces.







sinistra / left: SEMITONDO Layout 2 - City light grey
destra / right: SEMITONDO Layout 3 - Luz geyser



Hyperreal

— design: Elaine Yan Ling Ng

IT / Affascinanti giochi di volumi sono l'elemento che caratterizza questa collezione. L'inedita bombatura investe il triangolo di nuove connotazioni creando una combinazione dal ritmo casuale dove l'irregolarità della finitura bombata veste la parete di forme random.

EN / Fascinating optical effects are the most characterising feature of this collection. The tile has an irregular padded effect that gives a different connotation to the triangle and results in a casual and random yet original wall decoration.





Lady N

— design: Nadia Dalle Mese

IT / L'alternanza di bombature parziali e contrapposte crea trame affascinanti che ricordano le lavorazioni su tessuto. Sulla parete, singoli effetti di luce e ombra mettono in risalto forme e bombature sempre diverse, arricchendo gli interni di decori dal gusto contemporaneo ed estremamente raffinato.

EN / The variation of flat and padded areas creates fascinating textures reminiscent of fabric. The partial padding creates light and shadow effects and ever-changing shapes, enriching interiors with contemporary and refined design.



Ranella

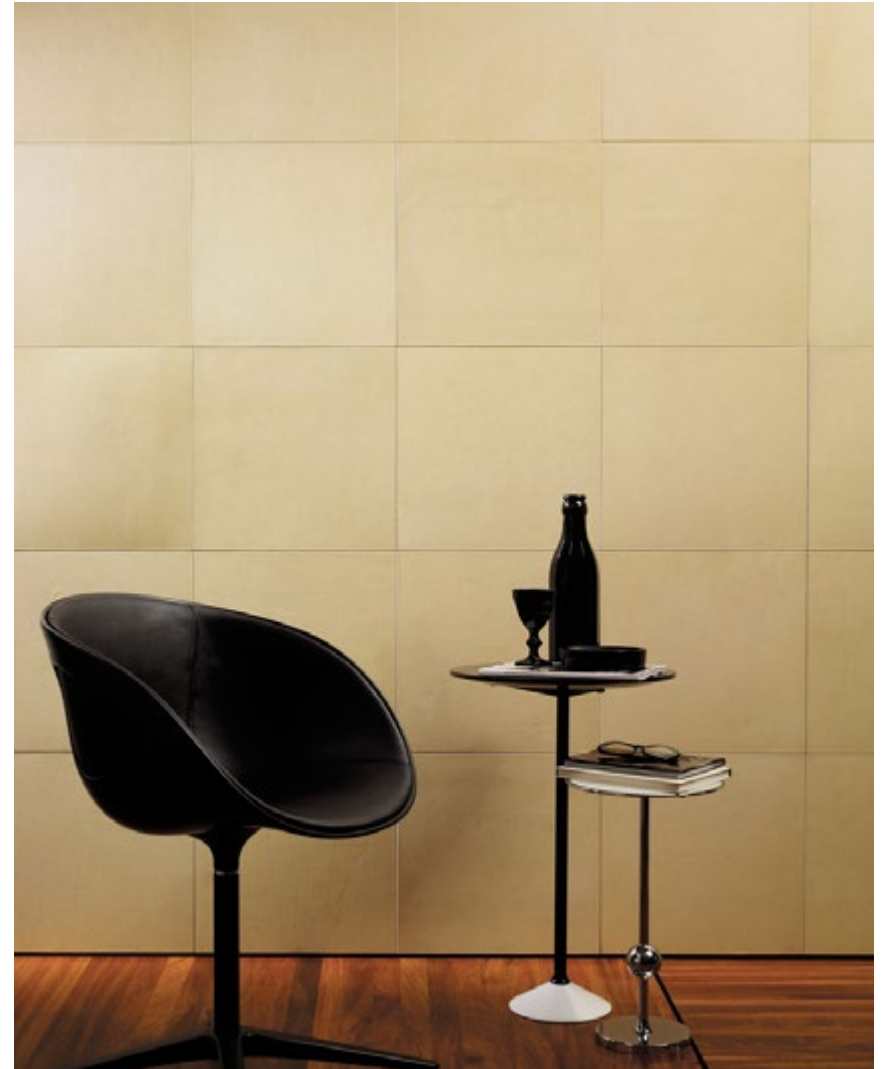
— design: Nadia Dalle Mese

IT / Un nuovo modo di interpretare la pelle. Una collezione nata dall'idea di mettere in relazione un minuzioso lavoro di ago e filo con la pelle, rispettandone la naturale morbidezza. Un ricamo materico e tridimensionale crea un vero e proprio effetto di bassorilievo, per impreziosire le pareti di dettagli preziosi dal gusto sartoriale.

EN / This embroidered collection is designed to match meticulous embroideries with leathers, whilst respecting their natural smoothness and feel. A highly textured and three-dimensional embroidery creates an original effect of low-relief on the surface, while enriching spaces with a sartorial allure.



The Core Line



STUDIOART.IT/
THE CORE LINE

SCHEDA TECNICA/
TECNICAL SHEET

INDICE/
INDEX

sinistra e sopra / left and above:
City carlos piano / flat
destra / right: City iceberg bombato / padded





sinistra / left: Satin egyptian gold bombato / padded

PAGINA DESTRA / RIGHT PAGE
sinistra / left: Satin white piano / flat
destra / right: City rosa inglese piano / flat



Mosaico

— design: Nadia Dalle Mese

IT / La collezione Mosaico racchiude tutto il know-how nella lavorazione di piastrelle in pelle di piccole dimensioni. Finiture regolari, sfumate o random creano superfici suggestive e dal gusto raffinato.

EN / The Mosaico collection perfectly represents the know-how in the production of small leather tiles. Regular, random finishes, or graduated shading patterns create evocative walls full of charm and refinement.









sinistra / left: MOSAICO Layout A - City white
bombato / padded

destra / right: MOSAICO Layout B - Velluto Chic olive brown
piano e bombato / flat and padded

Quadrato Special

— design: Nadia Dalle Mese

IT / Differenti dimensioni e finiture rendono la semplice forma quadrata l'elemento caratterizzante di ogni interior. Piccole tessere e formati più grandi, assieme alle finiture disponibili, permettono di dare un tocco personale ad ogni prodotto: elementi piani e bombati convivono con texture originali, donando un tocco sartoriale al rivestimento in pelle.

EN / Different dimensions and finishes make a simple square tile the defining element of any interior. Small tesserae and larger tiles, together with a wide range of finish options, make it possible to give a personalised touch to each collection: flat and padded elements are placed side by side to the ones with original textures, which is the distinctive detail giving a sartorial allure to the leather tiles.





sinistra / left: QUADRATO Layout A - Waternatural Chic ivory
bombato / padded
sopra / above: QUADRATO Layout B - Pezzara white piano / flat
destra / right: QUADRATO Layout C - Rodeo ice piano / flat



Rettangolo Special

— design: Nadia Dalle Mese

IT / Molteplici e complesse, le soluzioni di rivestimenti Leatherwall propongono il rettangolo in interessanti giochi geometrici: pose verticali, orizzontali e a spina di pesce per caratterizzare gli spazi di effetti ricercati e accattivanti. Pelli materiche aggiungono tridimensionalità, donando unicità e movimento alle pareti.

EN / Studioart's wall covering proposals present the rectangle in various combinations. The vertical, horizontal and herringbone layouts enrich spaces with elegant and charming wall covering solutions. Texturised leathers add three-dimensional effects giving movement and uniqueness to the walls.









sinistra / left: RETTANGOLO Layout A - Watersuede Chic 353
piano e bombato / flat and padded
destra / right: RETTANGOLO Layout C - Mushroom oyster
bombato / padded

Trapezio

— design: Nadia Dalle Mese

IT / Il trapezio, grazie alla combinazione in diverse pose e finiture, permette di vestire gli interni di superfici contemporanee ed eclettiche. Pose differenti e giochi geometrici creano insoliti accostamenti, dove gli spazi acquisiscono nuove proporzioni e lasciano spazio a numerose occasioni di personalizzazione.

EN / Thanks to the combination in different layouts and finishes, the trapezium dresses interiors with contemporary and eclectic wall coverings. Different layouts and geometric effects create unusual combinations to give spaces new dimensions and enhance the possibilities for personalisation.



WALTER ALBINI



sinistra/ left: TRAPEZIO Layout A - City lipstick
piano / flat
destra / right: TRAPEZIO Layout B - City bianco ottico
bombato / padded



Pattern 2

— design: Nadia Dalle Mese

IT / Studioart suggerisce un accostamento di tessere in tre diversi formati disposti in ordine casuale. Il pattern, disponibile nella finitura piana e bombata, dona movimento alla parete, impreziosendo gli spazi con un rivestimento raffinato e mai scontato. Disponibile in monocoloro, per un effetto raffinato ed elegante, e nella versione Luxury, che rende le superfici preziose e ricercate.

EN / Studioart suggests a blend of three different sizes of leather tiles with a random arrangement. The flat and padded finish gives an interesting movement effect to the surface, enhancing interiors with refined yet never obvious leather wall coverings. This pattern is available in a monochromatic version, for an extremely elegant and refined look, and in the Luxury version, for remarkable and chic surfaces.



STUDIOART.IT /
PATTERN 2

SCHEDA TECNICA/
TECHNICAL SHEET

INDICE/
INDEX

sopra / above: PATTERN 2 Waternatural Chic pearl
piano e bombato / flat and padded
destra / right: PATTERN 2 Palette Luxury silver
piano e bombato / flat and padded



Pattern 6

— design: Nadia Dalle Mese

IT / Una sofisticata proposta Leatherwall il cui elemento caratterizzante è il rettangolo, declinato in diversi formati e abbinato al quadrato per un rivestimento in pelle elaborato e suggestivo.

EN / A refined Leatherwall solution that combines rectangular leather tiles together with square ones to create an elaborate and suggestive effect.





Pattern 8

— design: Nadia Dalle Mese

IT / Una sapiente giustapposizione di piastrelle nei formati 10x10 cm / 20x20 cm dà origine a splendidi rivestimenti in pelle. Grazie alla finitura piano-bombata, gli spazi acquisiscono nuove proporzioni e si caratterizzano per pregio e unicità.

EN / A wise juxtaposition of 10x10 cm and 20x20 cm (4x4" / 8x8") creates charming leather wall coverings. Thanks to the flat and padded finish, spaces get new proportions and volumes while acquiring uniqueness and style.





Pattern 9

— design: Nadia Dalle Mese

IT / Piastrelle lunghe e sfalsate sono sapientemente posate richiamando i tronchi di bambù e creando un interessante pattern verticale che decora gli interni con audacia e ricercatezza.

EN / Long and staggered tiles are wisely laid out recalling bamboo trunks and creating an interesting vertical pattern that decorates interiors with unrivalled luxury.





Pattern 12

— design: Nadia Dalle Mese

IT / Dallo schema geometrico incisivo, questo pattern crea interessanti giochi ottici che donano originalità alle superfici. L'effetto tridimensionale è accentuato nella versione piana e bombata.

EN / A sharp geometric pattern to create innovative optical effects on the wall surface. The three-dimensional effect is further enhanced in the flat and padded version.



WALL TREATMENT

IT/ I teli Pezzara hanno origine da un'antica arte mediterranea dove le stringhe di pelle sono intrecciate a fili di cotone dell'ordito con tecniche artigianali-manuali. Disponibili in multipli di 1,25 x 3,00 m (4' x 10') e realizzati con una base telata, i teli Pezzara trovano straordinaria applicazione come rivestimento a parete. Il risultato è una sintesi di grande impatto visivo e tattile che dona alle pareti matericità ed eleganza.

EN/ The Pezzara panels derive from an old Mediterranean handicraft technique where aniline dyed leather laces are hand-loomed and woven with cotton threads. Supplied in rolls 1,25 x 3,00 m (4' x 10') with backing, the Pezzara panels can have an extraordinary application as wall treatment. The result is a dramatically attractive material that gives texture and elegance to each surface.





LEATHER ACCESSORIES

Pezzara Rug

— design: Nadia Dalle Mese

STUDIOART.IT/
PEZZARA RUG

SCHEDA TECNICA/
TECHNICAL SHEET

INDICE/
INDEX



Cuscini ricamo

— design: Nadia Dalle Mese

STUDIOART.IT/
CUSCINI RICAMO

SCHEDA TECNICA/
TECHNICAL SHEET

INDICE/
INDEX



DESIGNERS

IT / Studioart da sempre si occupa di progettare, sperimentare e produrre rivestimenti in pelle dal grande impatto tattile e visivo. Negli ultimi anni, il compito di reinterpretare il Leatherwall è stato affidato a designer esterni all'azienda per esplorare tecnologie innovative e portare il rivestimento murale ad un livello superiore.

I designer, dopo un'attenta formazione, sono stati liberi di creare, sperimentare ed interpretare il prodotto, sempre sotto la sapiente guida della proprietà. Il risultato di questa collaborazione ha portato alla creazione di collezioni ricche di personalità, dove la pelle diventa assoluta protagonista grazie a palette di colori originali e texture uniche.

La sapienza artigianale si coniuga con un'instancabile ricerca di nuove tecniche produttive che hanno portato Studioart ad affermarsi nel mondo dell'interior design e reso il Leatherwall il rivestimento murale in pelle per eccellenza.

EN / Studioart has always studied, tested and produced highly textured leather wall coverings. In the last years, it has entrusted external designers to re-interpret its signature Leatherwall to explore new and innovative techniques and take the leather wall covering to a new dimension.

After a careful training and supervision of the owners and creative directors, the designers have been free to create, study, and interpret the wall covering. The resulting collaborations have led to the creation of outstanding collections where leather becomes the sole protagonist thanks to original colour palettes and exclusive textures.

Artisan skills perfectly combine with an incessant research of production techniques that have led Studioart to be renowned in the world of interior design and Leatherwall to be the reference product for leather wall coverings.



Nadia Dalle Mese

IT/ Co-fondatrice di Studioart insieme al fratello Gianfranco, Nadia Dalle Mese è alla direzione creativa del brand. Architetto laureata all'Università IUAV di Venezia, è riuscita a coniugare la sua passione per il design e l'architettura con il grande heritage della realtà conciaria in cui è inserita. Leatherwall è il rivestimento murale in pelle frutto di questa unione: ogni collezione rappresenta tutto lo sforzo dei fondatori nel realizzare un prodotto che combina tecnologia, artigianalità e design.

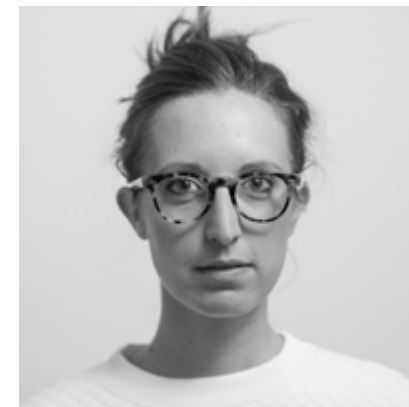
EN/ Co-founder of Studioart together with her brother Gianfranco, Nadia Dalle Mese has always been the brand's creative director. Architect graduated at IUAV, Venice, she found the way to marry her passion for architecture and design to the precious know-how in the leather industry she has always been immersed in. Leatherwall is the result of this union: each collection represents the founders' full efforts in presenting a product that is the right combination of technology, artisanal process and design.



Massimo Brancati

IT/ Massimo Brancati è la terza generazione della famiglia Dalle Mese, fondatrice del gruppo conciario di cui Studioart è parte. Laureato in Architettura presso l'università IUAV di Venezia, Massimo sperimenta nuove combinazioni e finiture coniugando la profonda conoscenza di processi e lavorazioni di pellami con l'ottimizzazione di risorse e processi produttivi. Le sue collezioni si caratterizzano per l'esplorazione della tridimensionalità e matericità delle pelli e il concetto di casualità apparente, rendendo questi prodotti flessibili e adattabili a svariate applicazioni.

EN/ Massimo Brancati is the third generation of the Dalle Mese family, founders of the tanning group of which Studioart is part. Graduated in Architecture at IUAV of Venice, Massimo has experimented new combinations and finishes combining a deep knowledge of leather processing and treatments with an optimisation of resources and production processes. His collections explore the three-dimensionality of surface with the willingness to create highly customizable products that could have the right flexibility to adapt to different interiors.



Giorgia Zanellato

IT/ Nata a Venezia, Giorgia Zanellato si è laureata all'Università IUAV di Venezia nel 2009 e all'Ecal (Svizzera) nel 2011 con un Master in Product Design. Giorgia ha collaborato come designer con aziende quali Moroso, Atipico, Rubelli, Petite Friture e Galleria Luisa Delle Piane. I suoi lavori sono stati esposti alla Triennale Design Museum, Maison & Objet, Miami Art Basel, London Design Festival, MUDAM. Le sue collezioni combinano artigianalità e innovazione, recuperando forme semplici e coniugandole con lavorazioni e finiture di alto livello.

EN/ Born in Venice, Giorgia Zanellato graduated at IUAV of Venice in 2009 and at Ecal (Switzerland) in 2011 with a Master in Product Design. Giorgia has been working as a freelance designer for clients such as Moroso, Atipico, Rubelli, Petite Friture and Galleria Luisa Delle Piane. Her designs have been exhibited at Triennale Design Museum, Maison & Objet, Miami Art Basel, London Design Festival, MUDAM and others. Her collections are a combination of specialised craftsmanship and innovation, where simple geometrical shapes are combined with high-end finishes and artisanal techniques.



Elaine Yan Ling Ng

IT/ Elaine Yan Ling Ng, anche conosciuta come 'techno fairy' da Elle Decor, fondatrice di The Fabrick Lab, unisce tessuto, elettronica, biomimica, decorazione di interni e installazioni. Elaine è una visionaria artista multimediale anglo-cinese, laureata a pieni voti in Design Textile Futures all'Università Central Saint Martins di Londra. Le sue collezioni si ispirano alla capacità della natura di moltiplicarsi e combinarsi spontaneamente. Tale concetto evoca i processi di lavorazione di Studioart dove convivono la componente naturale della pelle e una rigorosa progettazione ingegneristica, ricreando una esperienza immersiva attraverso volumi, matericità e illusione.

EN/ Elaine Yan Ling Ng, also known as the 'techno fairy' by Elle Décor, founder of THE FABRICK LAB, brings together textiles, electronics, biomimicry, interiors and installations. Elaine is a British Chinese visionary multi-media artist and a graduate of Central Saint Martins in London where she earned her MA Design in Textile Futures with distinction. Her collections were inspired by nature's ability to multiply and arrange in the most intelligent and compact ways. Her starting point began with the intention to combine outdoor natural forms with interiors, and create a new immersive experience through volume, tactility and illusion.



Adam Hunter

IT/ Conosciuto per la progettazione di interni squisitamente dinamici e personalizzati che prendono spunto dal suo passato di star di Broadway, Adam Hunter è punto di riferimento nel panorama del design di Los Angeles. Dopo anni di ruoli da protagonista sotto i riflettori, Hunter ha convertito la sua passione per il teatro e lo spettacolo alla progettazione di interni residenziali e commerciali estremamente scenografici. Gli spazi progettati da Hunter si caratterizzano per il gusto raffinato nella scelta del colore e l'amore per l'uso di rivestimenti originali e accattivanti.

EN/ Celebrated for his dynamic, bespoke interiors that take cue from his decade as a star on Broadway – Adam Hunter is force in the Los Angeles design community. After years of leading roles under the bright lights, Hunter shifted his passion for drama and spectacle beyond the stage to designing extraordinary commercial and residential interiors across the country. His work is defined by his exquisite eye for color and use of rare and highly customised surfaces that captivate – bringing a hint of magic to every space he creates.



Grove Studio

IT/ Grove Studio è un gruppo di designer di talento che, grazie alle competenze maturate, propone soluzioni fortemente ricercate. Specializzata nella progettazione di hotel di lusso e residenze esclusive, la loro proposta si traduce in una vasta gamma di materiali e finiture caratterizzati da elevata qualità, raffinatezza e armonia, per garantire soluzioni dal lusso disinvolto e mai scontato. La collezione di Grove per Studioart è un perfetto equilibrio tra elementi classici e moderni, dove le pelli sono ulteriormente arricchite da metalli sofisticati e pattern elaborati.

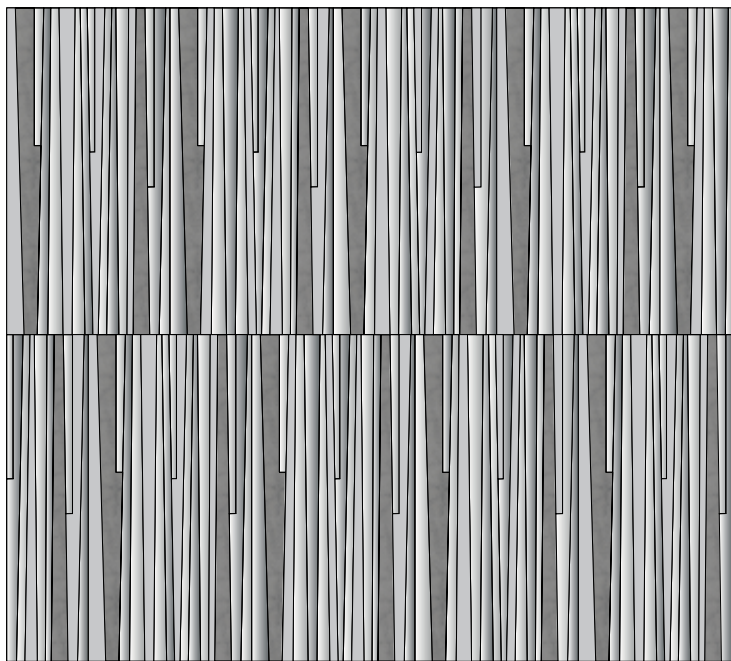
EN/ Grove Studio is comprised of a group of talented designers who bring unique perspectives and skills. Specialised in the design of luxury hotels, upscale residential and executive settings, their work results in a curated array of materials, textures and finishes with an underlying appreciation for quality, refinement, harmony that is effortlessly luxurious. Grove's collection for Studioart is a perfect balance between modern and classic, where leathers are ultimately enriched with sophisticated metals and elaborated patterns.



SCHEDE
TECNICHE
TECHNICAL
SHEETS

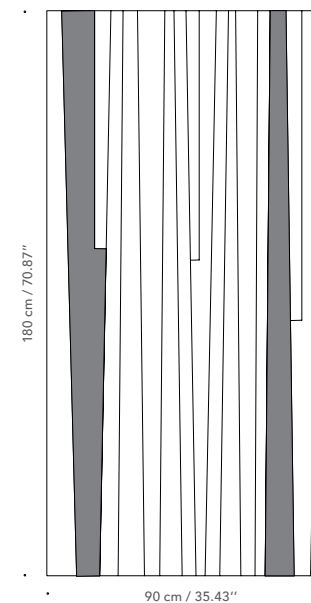
Lapis

INDICE/
INDEX



FORMATI / SIZES

90x180 cm / 35.43"x70.87"



PELLI / LEATHERS

VELLUTO CHIC

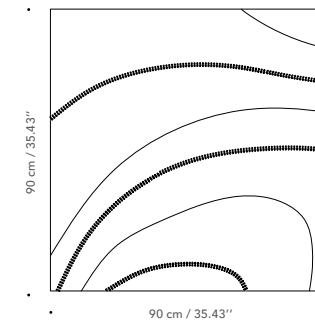


Terra

INDICE/
INDEX

FORMATI / SIZES

90x90 cm / 35.43''x35.43''



PELLI / LEATHERS

VELLUTO CHIC



GREIGE NOCE OLIVE B. MELANZANA COGNAC BLUSH ENGLISH ROSE IMBRUNIRE DUSTY GRAPE INKY BLUE GINEPRO EDERA



SOTTOBOSCO FOSSIL

SALAR

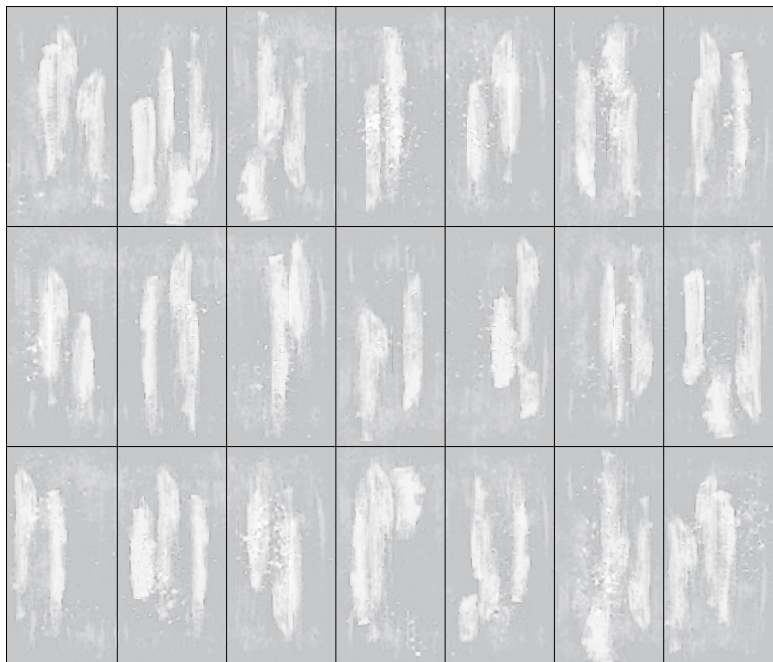


GIRASOLE CUOIO MOGANO T.MORO OLIVA BLU FUMO NERO

Neo

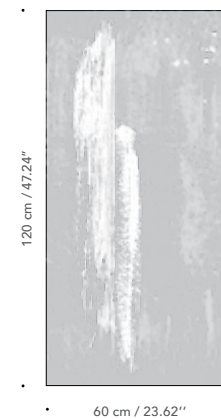
INDICE/
INDEX

LAYOUT



FORMATI / SIZES

60x120 cm / 23.62"x47.24"



PELLI / LEATHERS

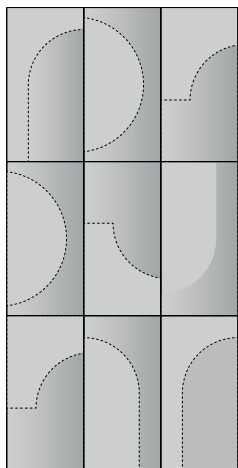
DENIM



Bon Ton

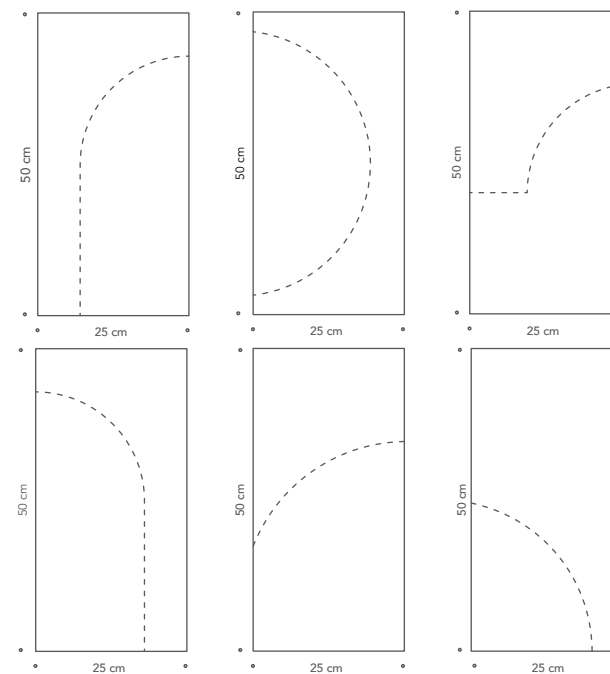
INDICE/
INDEX

LAYOUT A



FORMATI / SIZES

25x50 cm / 9.84''x19.69''



PELLI / LEATHERS

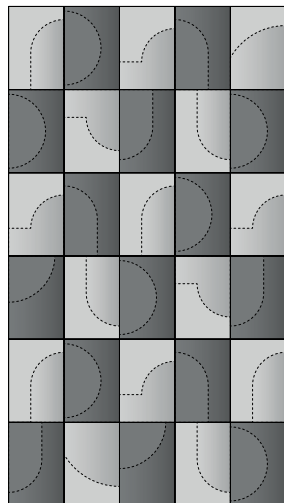
CITY



Pop

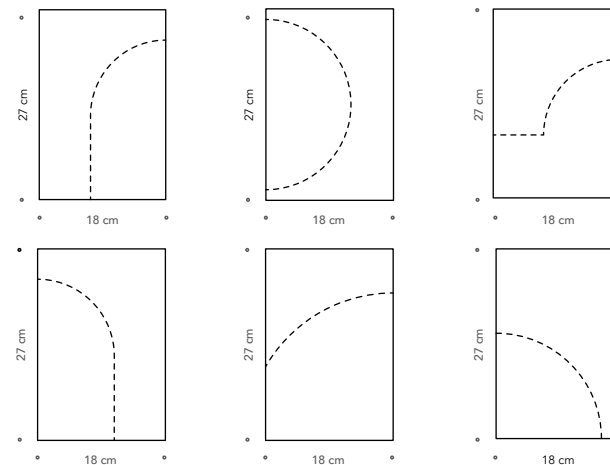
INDICE/
INDEX

LAYOUT 1



FORMATI / SIZES

18x27 cm / 7.09"x10.63"



PELLI / LEATHERS

PALETTE 1



FIOCCO / ARIA

PALETTE 2



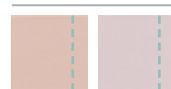
PURPLE / VIOLETTE

PALETTE 3



SAMBA / ZUCCA

PALETTE 4



ROSA INGLESE / PEONIA

PALETTE 5



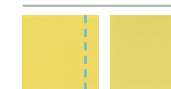
PETROLIO / ATLANTICO

PALETTE 6



COCO' / CAMPARI

PALETTE 7



YELLOW / ACID GREEN

PALETTE 8

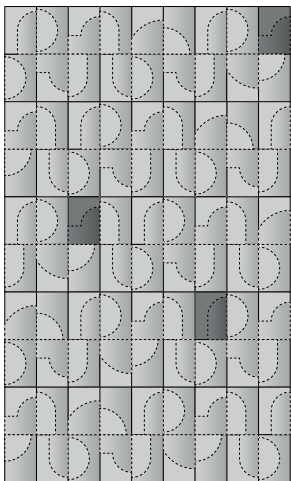


BLU MAGIA / BLU ELETTRICO

Bijou

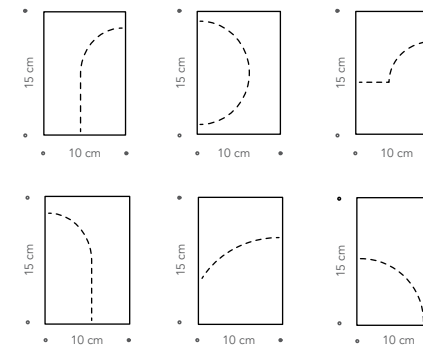
INDICE/
INDEX

LAYOUT A



FORMATI / SIZES

10x15 cm / 3.94"x5.91"



PELLI / LEATHERS

PALETTE 1



PORCELAIN / ARGENTO

PALETTE 2



GREIGE / ARGENTO

PALETTE 3



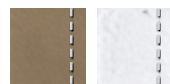
LIGHT JADE / ARGENTO

PALETTE 4



PERLA / ARGENTO

PALETTE 5



AGLIO / ARGENTO

PALETTE 6



GREIGE / ORO

PALETTE 7



INKY BLUE / ANTRACITE

PALETTE 8



OLIVE BROWN / ORO

PALETTE 9



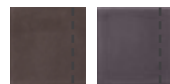
ENGLISH ROSE / ANTRACITE

PALETTE 10



TORTORA / ORO

PALETTE 11



DUSTY GRAPE / ANTRACITE

PALETTE 12

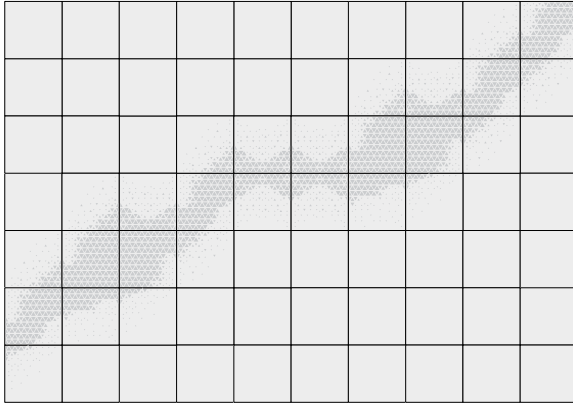


POUDRE / ORO

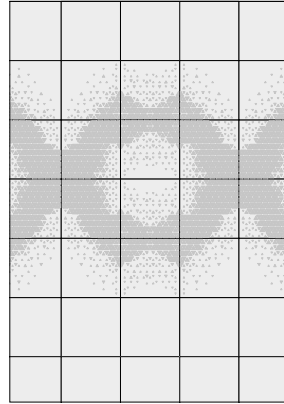
Duo

INDICE/
INDEX

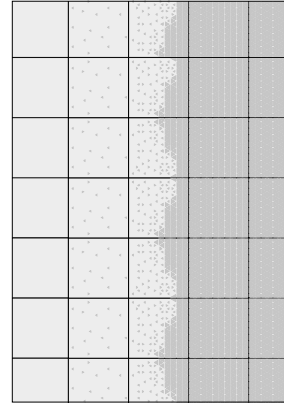
LAYOUT A



LAYOUT B

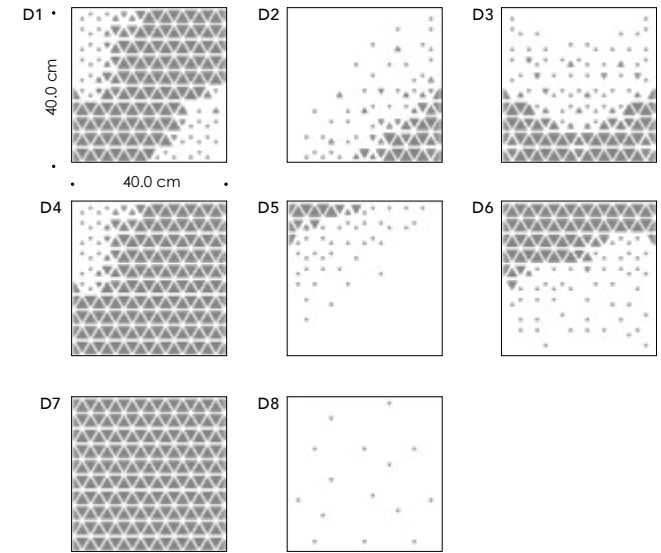


LAYOUT C



FORMATI / SIZES

40x40 cm / 15.76"x15.76"



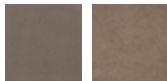
PELLI / LEATHERS

PALETTE 1



NUVOLA / 412

PALETTE 2



CENERE / 353

PALETTE 3



VORONOF / SAGE

PALETTE 4



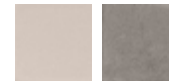
PASTORIUS / IVORY

PALETTE 5



BURRO / IVORY

PALETTE 6



GRISROSE / 415

PALETTE 7



CENERE / SAND

PALETTE 8



POLVERE / DESERT

PALETTE 9

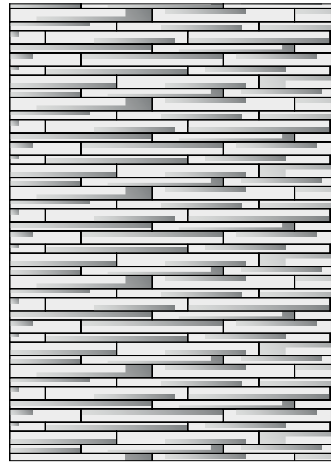


BIANCO OTTICO / CRYSTAL

Woods

INDICE/
INDEX

LAYOUT 1



LAYOUT 2-MUSHROOM

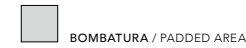
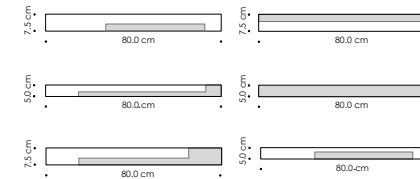


ZOOM LAYOUT 2-MUSHROOM



FORMATI / SIZES

80x5 cm / 31.52"x1.97"; 80x7.5 cm / 31.52"x2.96"



PELLI / LEATHERS

CITY



SATIN



SALAR



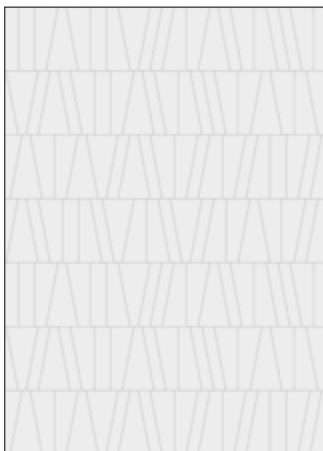
MUSHROOM



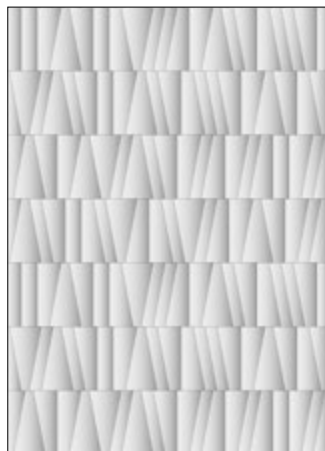
Frammenti

INDICE/
INDEX

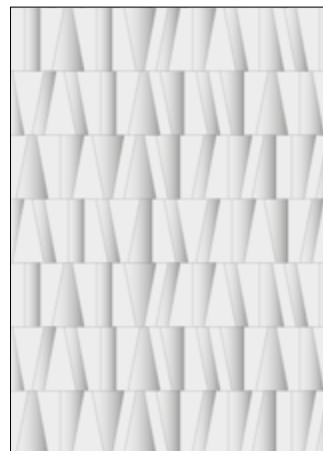
LAYOUT 1
PIANO/FLAT



LAYOUT 2
BOMBATO/PADDED

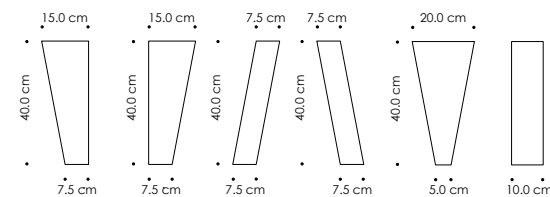


LAYOUT 3
PIANO-BOMBATO/FLAT-PADDED



FORMATI / SIZES

7.5x40x15 cm / 2.96"x15.76"x5.91"; 7.5x40x15 cm / 2.96"x15.76"x5.91";
7.5x7.5 cm - h 40 cm / 2.96"x2.96" - h 15.76"; 5x40x20 cm / 1.97"x15.76"x7.88";
10x40 cm / 3.94"x15.76"



PELLI / LEATHERS

CITY



WATERNATURAL CHIC



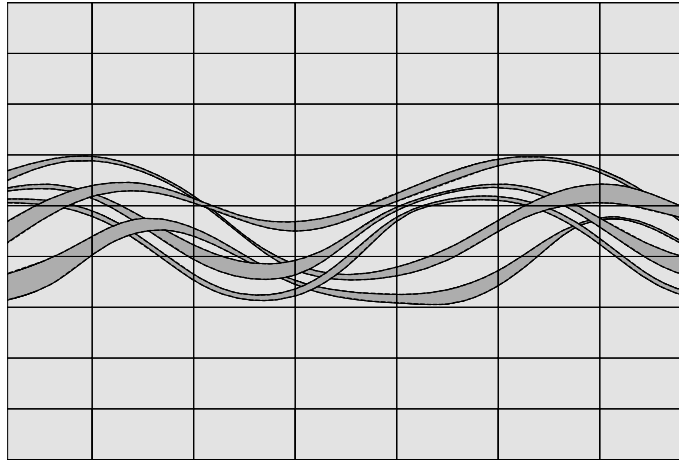
TESORO



Lumen

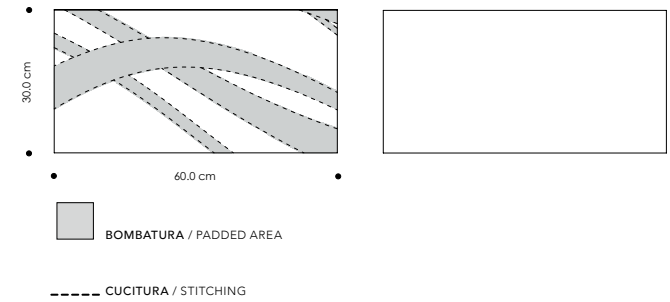
 INDICE/
INDEX

CUCITO



FORMATI / SIZES

30x60cm / 11.81"x23.62"



PELLI / LEATHERS

WATERSUEDE CHIC



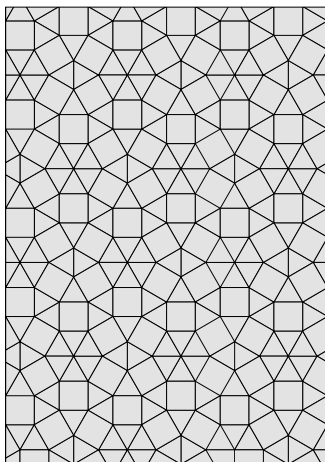
VELLUTO CHIC



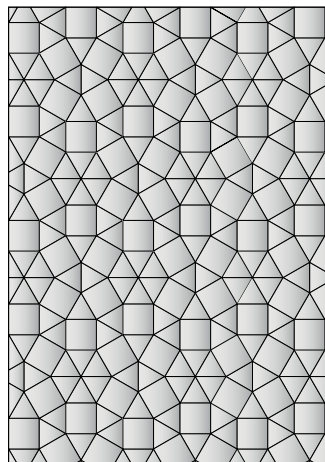
Kaleido

INDICE/
INDEX

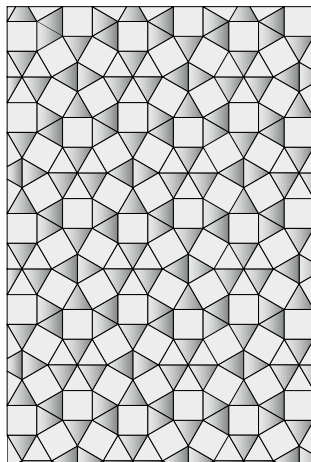
LAYOUT 1
PIANO/FLAT



LAYOUT 2
BOMBATO/PADDED

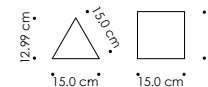


LAYOUT 3
PIANO-BOMBATO/FLAT-PADDED



FORMATI / SIZES

15x15 cm - h 12,99 cm / 5.91"x5.91" - h 5.118"
15x15 cm / 5.91"x5.91"



PELLI / LEATHERS

CITY



SATIN



TESORO



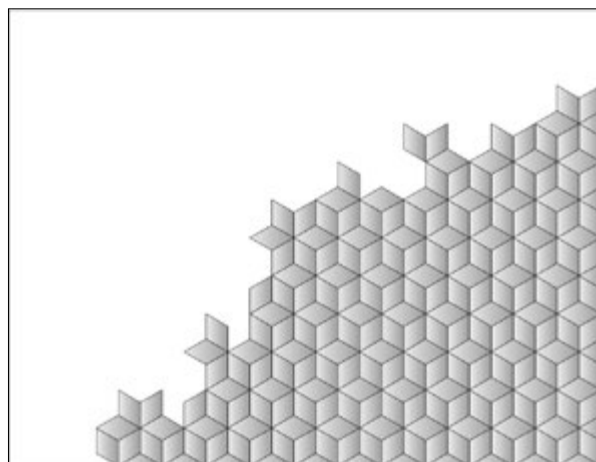
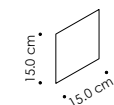
Neige

 INDICE/
INDEX

 LAYOUT A
BOMBATO/PADDED

FORMATI / SIZES

15x15 cm / 5.91"x5.91"



PELLI / LEATHERS

CITY

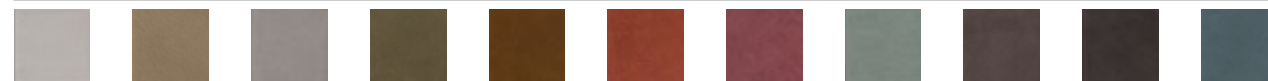


BIANCO O. GREIGE SHELL OYSTER CIPRIA CREME C. CREMA CAMEL LIPSTICK BORDEAUX DK BROWN EBANO



CACHEMIRE GRISROSE ARIA CIELO NUVOLA OSSIFO CENERE OTTANIO PETROLIO BOEING VORONOF BLACK

VELLUTO CHIC

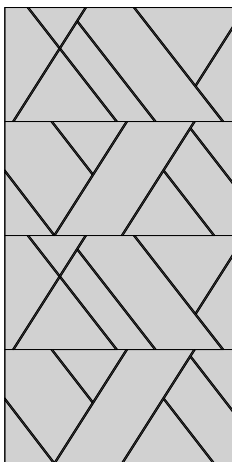


GREIGE AGLIO PERLA OLIVE BROWN COGNAC ROSSO ANTICO BLUSH LIGHT JADE DUSTY GRAPE CERTOSINO GINEPRO

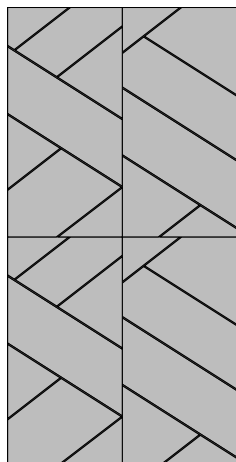
Le Mans

INDICE/
INDEX

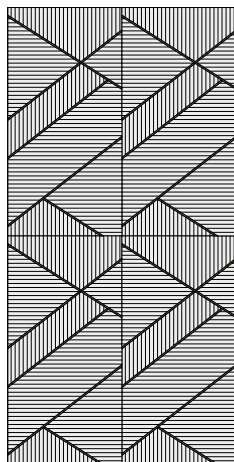
LAYOUT B
PIANO/FLAT



LAYOUT C
PIANO/FLAT

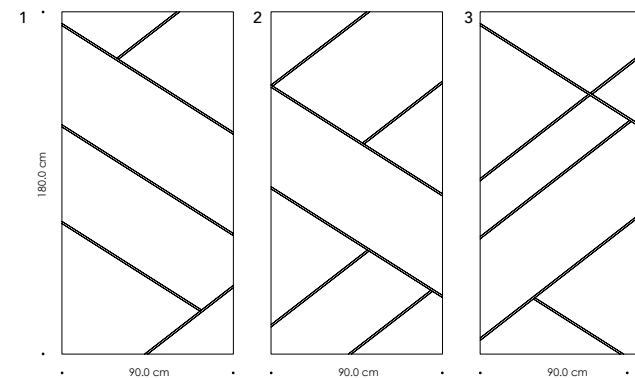


LAYOUT D - MUSHROOM



FORMATI / SIZES

90x180 cm / 35.43"x70.86"



Posato su pannello di spessore 10 mm / Assembled on panel 10 mm - 0.39"

PELLI / LEATHERS

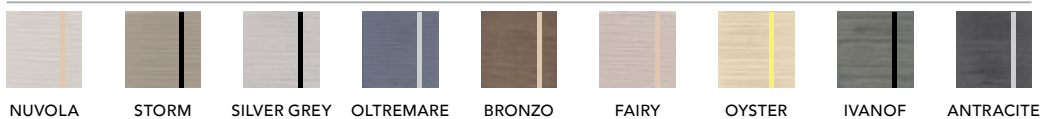
CITY



VELLUTO CHIC



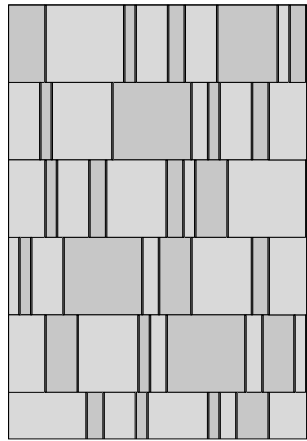
MUSHROOM



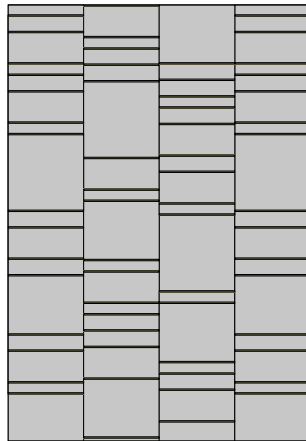
Ryder

INDICE/
INDEX

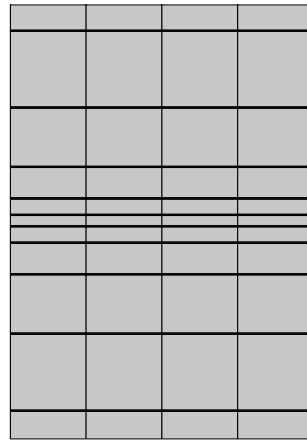
LAYOUT A
PIANO/FLAT



LAYOUT B
PIANO/FLAT

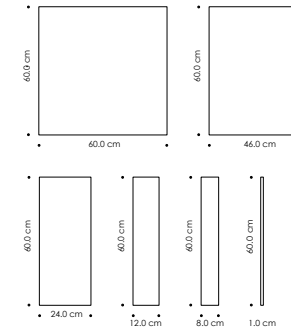


LAYOUT C
PIANO/FLAT



FORMATI / SIZES

8x60 cm / 3.15"x23.62"; 12x60 cm / 4.72"x23.62"
24x60 cm / 9.44"x23.62"; 46x60 cm / 18.11"x23.62"
60x60 cm / 23.62"x23.62"; 1x60 cm / 0.39"x23.62"



PELLI / LEATHERS

PALETTE 1



COGNAC / COGNAC

PALETTE 2



GREIGE / GREIGE

PALETTE 3



LIGHT GREY / PERLA

PALETTE 4



BLACK / NOIR

PALETTE 5



POLVERE / AGLIO

PALETTE 6



NAVY / DEEP BLUE

CITY



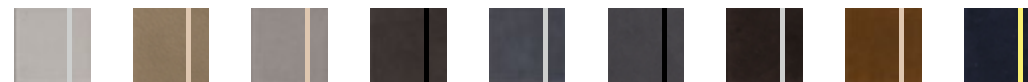
NUVOLA LIGHT GREY STORM CENERE VORONOF OSSIPOF COGNAC CACHEMIRE BURRO JEANS DARK GREY NAVY

WATERSUEDE CHIC



IVORY 412 415 53 390

VELLUTO CHIC

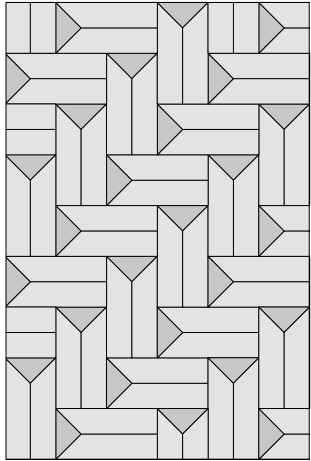


GREIGE AGLIO PERLA CERTOSINO INKY BLUE FOSSIL T. MORO COGNAC DEEP BLUE

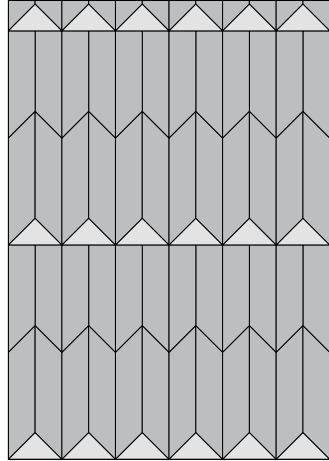
Continental

INDICE/
INDEX

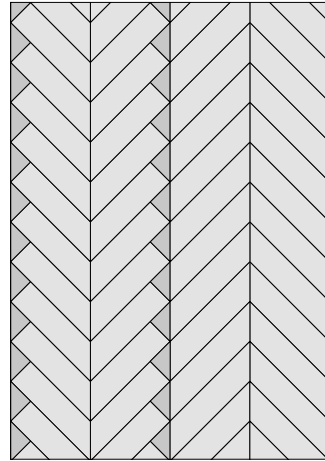
LAYOUT A
PIANO/FLAT



LAYOUT B
PIANO/FLAT

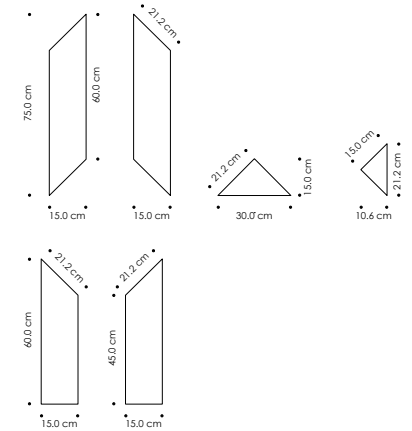


LAYOUT C
PIANO/FLAT



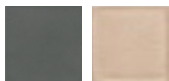
FORMATI / SIZES

15x75 cm / 5.9"x29.52"; 30x15 cm / 11.81"x5.9";
15x60 cm / 5.9"x23.62"; 15x15 cm / 5.9"x5.9"



PELLI / LEATHERS

PALETTE 1



VORONOF / RAME

PALETTE 2



NAVY / ORO

PALETTE 3



STORM / RAME

PALETTE 4



BURRO / BRONZO

PALETTE 1



POLVERE / T. MORO

PALETTE 2



STORM / INKY BLUE

PALETTE 3



POLVERE / INKY BLUE

PALETTE 4



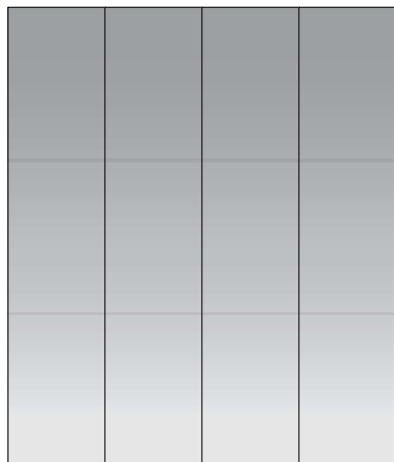
DARK GREY / AGLIO

Palisades

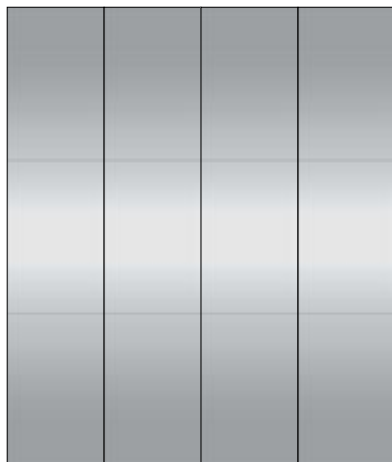
INDICE/
INDEX

LAYOUT

LAYOUT A
PIANO/FLAT

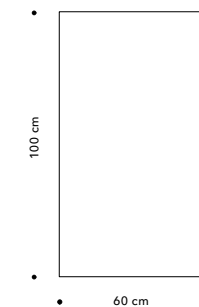


LAYOUT C
PIANO/FLAT



FORMATI / SIZES

60x100 cm / 23.62"x39.37"



PELLI / LEATHERS

PALETTE GOLD



PALETTE 1



PALETTE 4



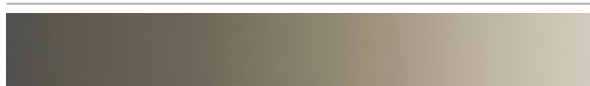
PALETTE SILVER



PALETTE 3



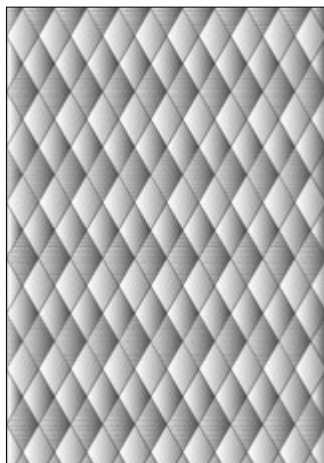
PALETTE 6



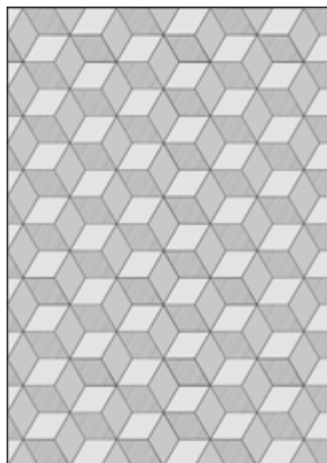
Losange

INDICE/
INDEX

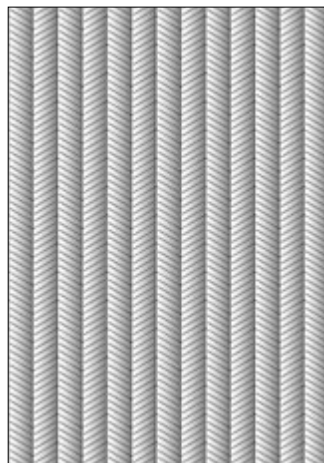
LAYOUT 1
BOMBATO/PADDED



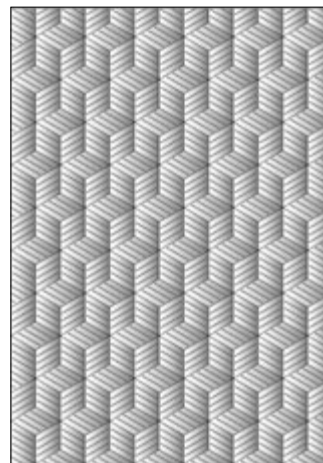
LAYOUT 2
PIANO/FLAT



LAYOUT 3
BOMBATO-CUCITO/PADDED-STITCHED

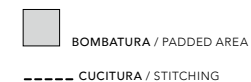
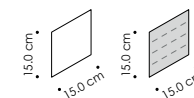


LAYOUT 4
BOMBATO-CUCITO/PADDED-STITCHED



FORMATI / SIZES

15x15 cm / 5.91"x5.91"



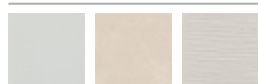
PELLI / LEATHERS

PALETTE 1



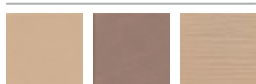
CIELO / GEYSER / CIELO

PALETTE 2



NUVOLA / COOL / NUVOLA

PALETTE 3



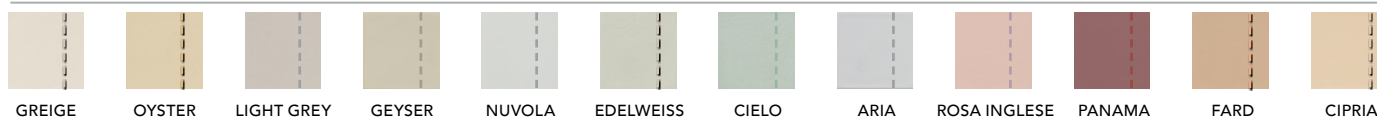
FARD / HOLMES / FARD

PALETTE 4



OYSTER / NUDE / OYSTER

CITY



GREIGE OYSTER LIGHT GREY GEYSER NUVOLA EDELWEISS CIELO ARIA ROSA INGLESE PANAMA FARD CIPRIA

LUZ

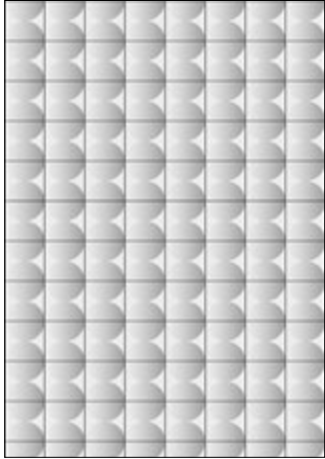


COOL CAPPUCCINO GEYSER FARD HOLMES NUDE

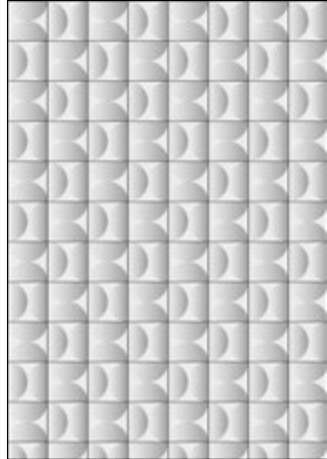
Semitondo

INDICE/
INDEX

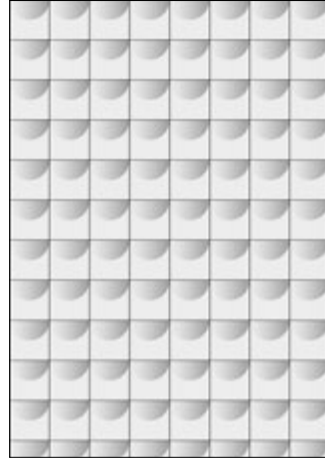
LAYOUT 1



LAYOUT 2

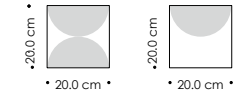


LAYOUT 3



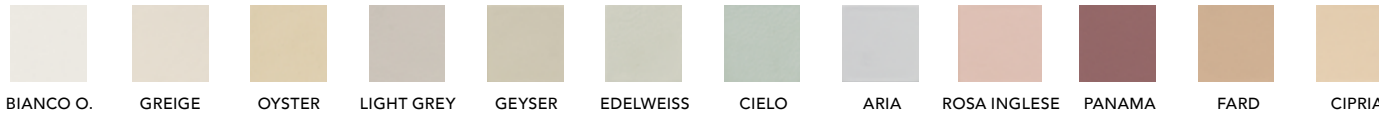
FORMATI / SIZES

20x20 cm / 7.88"x7.88"



PELLI / LEATHERS

CITY



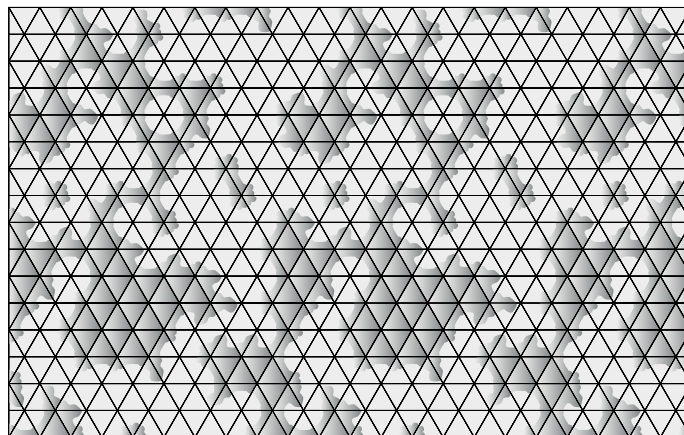
LUZ



Hyperreal

INDICE/
INDEX

LAYOUT 1
PIANO-BOMBATO/FLAT-PADDED



FORMATI / SIZES

15x15 cm - h 12.99 cm / 5.91"x5.91" - h 5.118"



PELLI / LEATHERS

CITY



SATIN

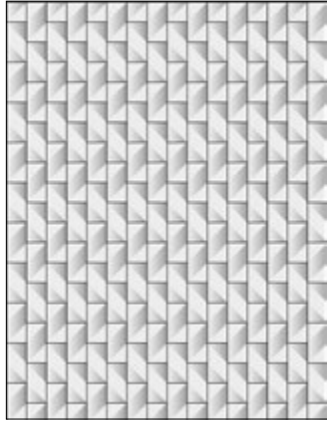
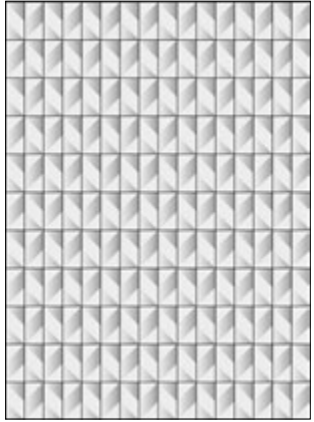


Lady N

INDICE/
INDEX

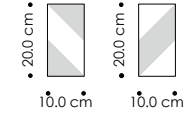
LAYOUT 1

LAYOUT 2



FORMATI / SIZES

10x20 cm / 3.94"x7.88"



PELLI / LEATHERS

CITY



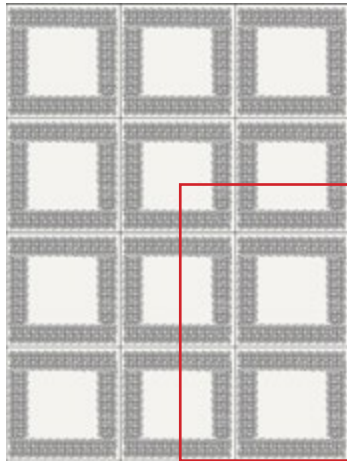
SATIN



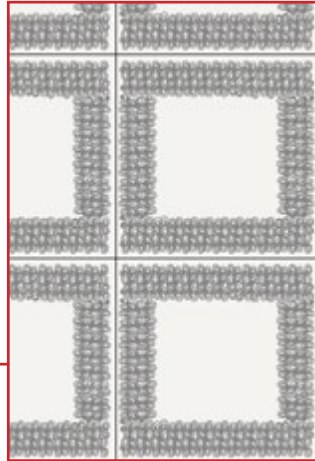
Ranella

INDICE/
INDEX

LAYOUT A
BOMBATO/PADDED

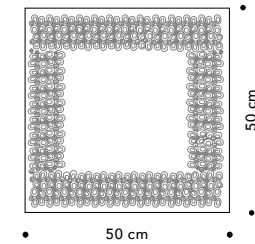


ZOOM LAYOUT A
BOMBATO/PADDED



FORMATI / SIZES

50x50 cm / 19.69"x19.69"



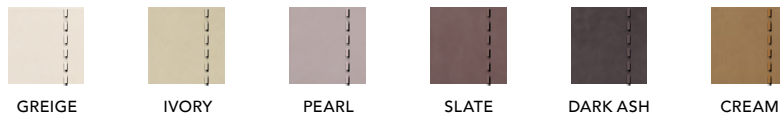
FINITURA bombata / FINISH padded

La pelle è un prodotto naturale, leggere variazioni di colore sono caratteristiche del prodotto e della tecnica di lavorazione.

Leather is an organic material, slight colour variations are natural characteristic of the product and related to processing techniques.

PELLI / LEATHERS

WATERNATURAL CHIC



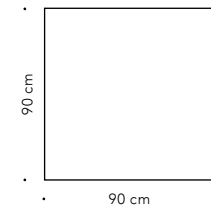
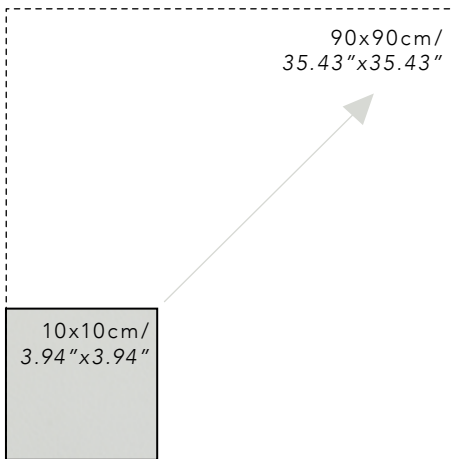
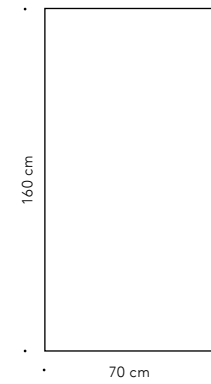
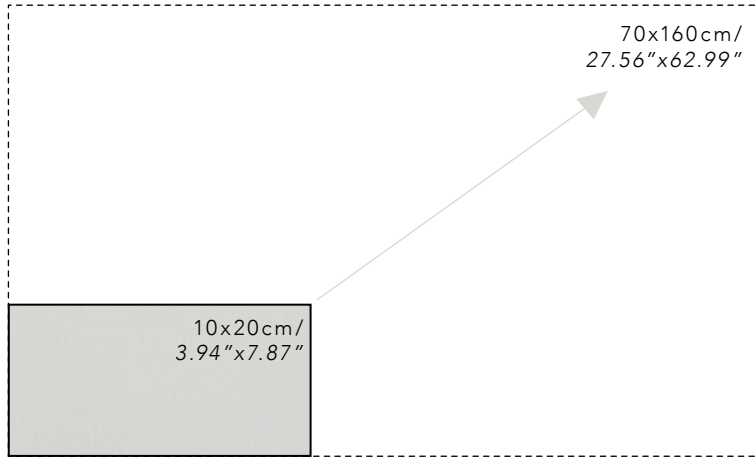
The Core Line

INDICE/
INDEX

FORMATI / SIZES

Formato piastrelle da 10x10 cm a 70x160 cm /

Tiles dimension from 10x10 cm (3.94"x3.94") to 70x160 cm (27.56"x62.99")



* Watersuede da 10x10 cm a 90x90 cm /

* Watersuede from 10x10 cm (3.94"x3.94") to 90x90 cm (35.43"x35.43")

PELLI / LEATHERS

CITY

BIANCO O.	WHITE	SHELL	BURRO	CACHEMIRE	GREIGE	LIGHT GREY	ARIA	NUVOLA	SKY	CIELO	STORM	GRISROSE	POLVERE	EDELWEISS	GEYSER	OSSIPOF
OYSTER	CIPRIA	FARD	MARMO	STONE	ATMOSFERA	CENERE	GRAFITE	SAND STONE	MOKACCINO	PANCAKE	MINERALE	OLD ICE	CARLOS	MANDORLA	CREMA	GRISVERT
YELLOW	CREME C.	ACID GREEN	MELA	TUNDRA	PASTORIUS	ZABAIONE	ZUCCA	SAMBA	ALBICOCCA	ROSA I.	PEONIA	PANAMA	LIPSTICK	COCO'	CAMPARI	VORONOF
DK BROWN	EBANO	MIMETICO	BOSCO	MUSCHIO	TERRA	SAND	CAMEL	WALLNUT	CAMEL	COGNAC	AUTUNNO	MERLOT	BORDEAUX	PURPLE	VIOLETTE	DARK GREY
SCARABEO	COLLEGE	FIOCCO	BOEING	GELICE	ATLANTICO	PETROLIO	OTTANIO	GINEPRO	JEANS	BLU ELETTRICO	BLU MAGIA	ICEBERG	NAVY	MOUSE	BLACK	

WATERSUEDE CHIC

IVORY	352	410	2	POWDER	D.BEIGE	415	412	414	SAGE	48	53

SATIN

WHITE	FAIRY	PIOMBO	IVANOF	BRONZO	EGYPTIAN G.	COPPER	SILVER GREY	OLTREMARE	COSMICA	ANTRACITE

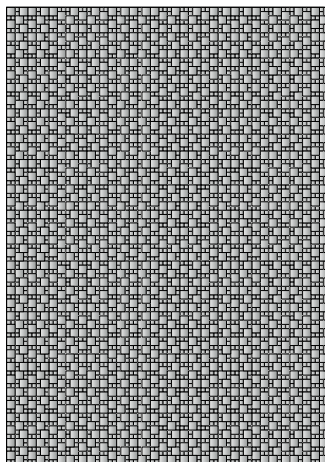
VELLUTO CHIC

GREIGE	AGLIO	PERLA	OLIVE BROWN	COGNAC	ROSSO ANTICO	BLUSH	LIGHT JADE	DUSTY GRAPE	CERTOSINO	GINEPRO

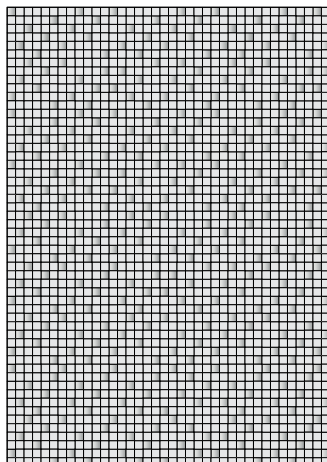
Mosaico

INDICE/
INDEX

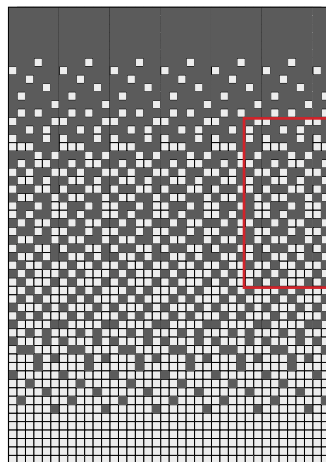
LAYOUT A
BOMBATO/PADDED



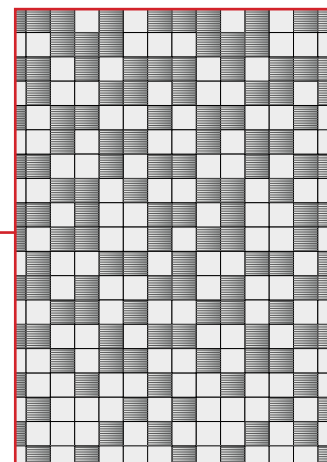
LAYOUT B
PIANO-BOMBATO/FLAT-PADDED



LAYOUT C
PIANO-BOMBATO/FLAT-PADDED



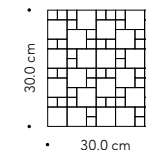
ZOOM LAYOUT C
PIANO-BOMBATO/FLAT-PADDED



FORMATI / SIZES

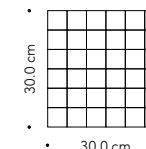
LAYOUT A

2.5x2.5 cm / 0.98"x0.98"; 5x5 cm / 1.97"x1.97"
preassemblato in pannelli 30x30 cm / 11.81"x11.81"
preassembled on panel 30x30 cm / 11.81"x11.81"



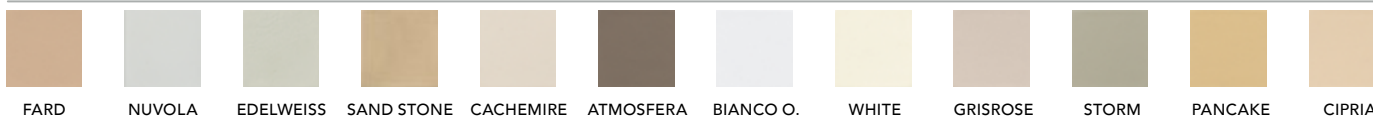
LAYOUT B - C

5x5 cm / 1.97"x1.97"
preassemblato in pannelli 30x30 cm / 11.81"x11.81"
preassembled on panel 30x30 cm / 11.81"x11.81"



PELLI / LEATHERS

CITY



VELLUTO CHIC



PALETTE 1 - CITY



PALETTE 2 - CITY



PALETTE 3 - CITY



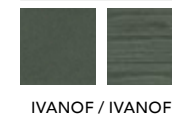
PALETTE 4 - SATIN



PALETTE 5 - SATIN

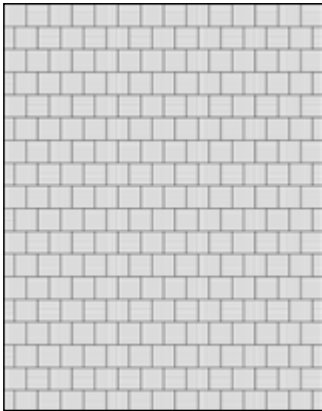


PALETTE 6 - SATIN



Quadrato Special

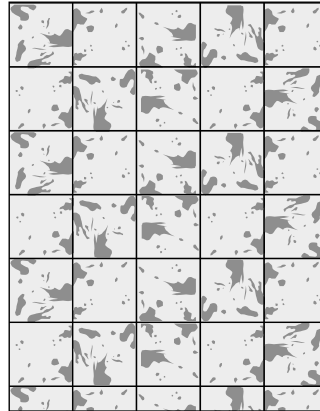
LAYOUT A - MUSHROOM
BOMBATO/PADDED



LAYOUT B - PEZZARA
PIANO/FLAT

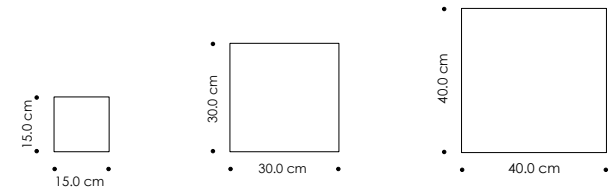


LAYOUT C - RODEO
PIANO/FLAT



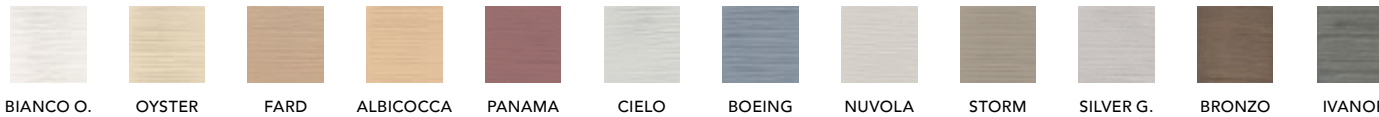
FORMATI / SIZES

15x15 cm / 5.91"x5.91"; 30x30 cm / 11.81"x11.81"; 40x40 cm / 15.76"x15.76"



PELLI / LEATHERS

MUSHROOM



PEZZARA



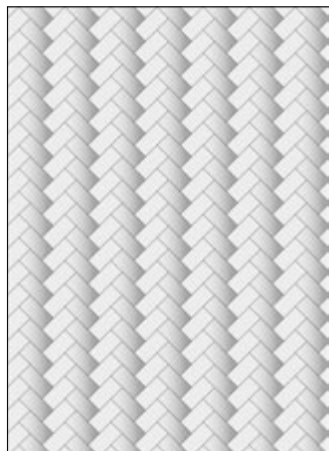
RODEO



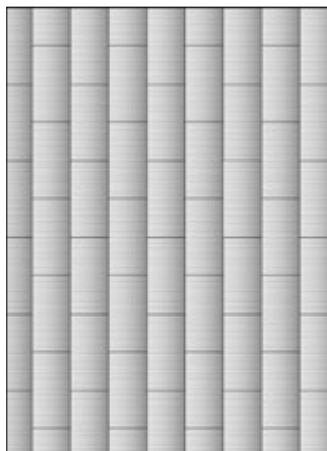
Rettangolo Special

INDICE/
INDEX

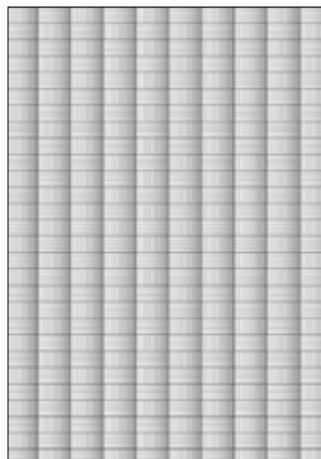
LAYOUT A
PIANO-BOMBATO/FLAT-PADDED



LAYOUT B - PEZZARA
BOMBATO/PADDED

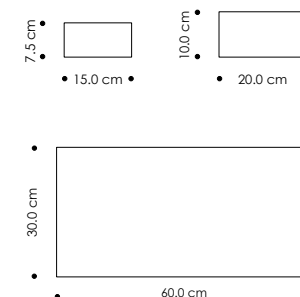


LAYOUT C - MUSHROOM
BOMBATO/PADDED



FORMATI / SIZES

7.5x15 cm / 2.96"x5.91"; 10x20 cm / 3.94"x7.88";
30x60 cm / 11.81"x23.62"



PELLI / LEATHERS

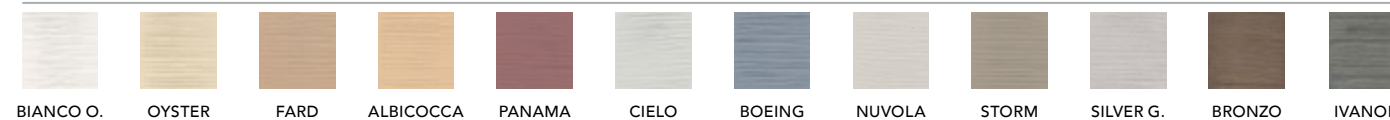
WATERSUEDE CHIC



PEZZARA



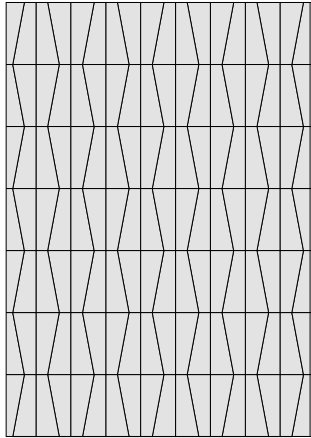
MUSHROOM



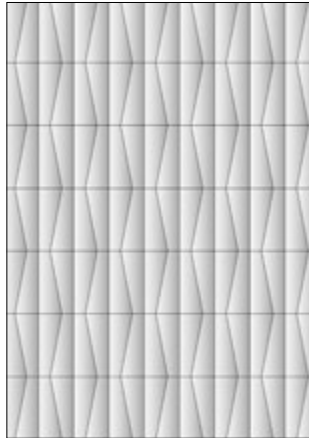
Trapezio

INDICE/
INDEX

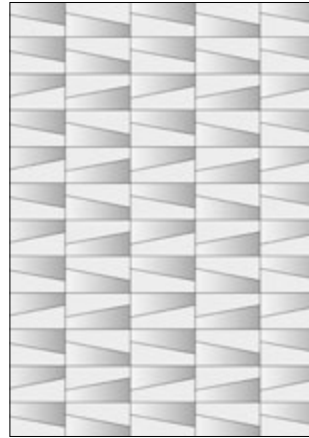
LAYOUT A



LAYOUT B

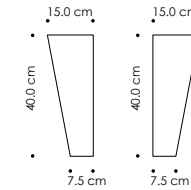


LAYOUT C



FORMATI / SIZES FORMATI / SIZES

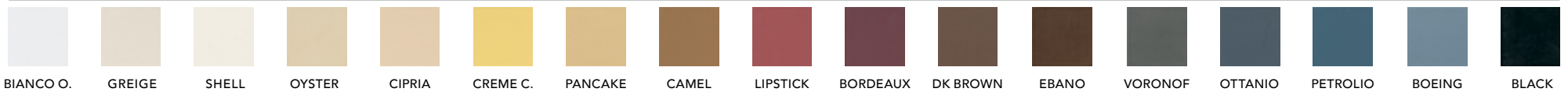
7.5x40x15 cm / 2.96"x15.76"x5.91"



FINITURE: piano - bombato
FINISHES: flat - padded

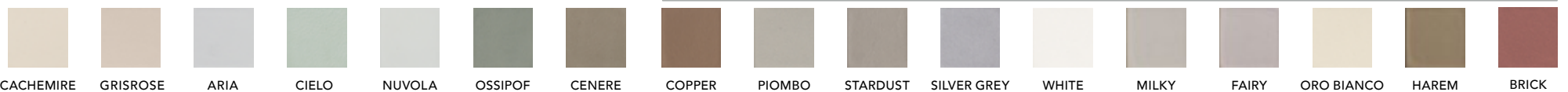
PELLI / LEATHERS

CITY



BIANCO O. GREIGE SHELL OYSTER CIPRIA CREME C. PANCAKE CAMEL LIPSTICK BORDEAUX DK BROWN EBANO VORONOF OTTANIO PETROLIO BOEING BLACK

SATIN



CACHEMIRE GRISROSE ARIA CIELO NUVOLA OSSIPOF CENERE COPPER PIOMBO STARDUST SILVER GREY WHITE MILKY FAIRY ORO BIANCO HAREM BRICK

WATERNATURAL CHIC



GREIGE IVORY PEARL AGLIO SLATE DARK ASHE PANAMA INTEGRALE CREAM STEEL GINEPRO NAVY

VELLUTO CHIC



GREIGE AGLIO PERLA OLIVE BROWN COGNAC ENGLISH ROSE BLUSH LIGHT JADE DUSTY GRAPE INKY BLUE GINEPRO

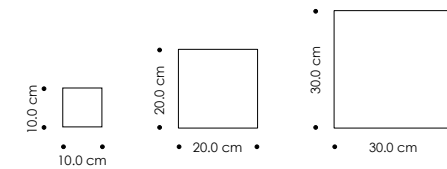
Pattern 2

INDICE/
INDEX

LAYOUT A - PIANO-BOMBATO-FLAT/PADDED

FORMATI / SIZES

10x10 cm / 3.94"x7.88"; 20x20 cm / 7.88"x7.88";
30x30 cm / 11.81"x11.81"



PELLI / LEATHERS

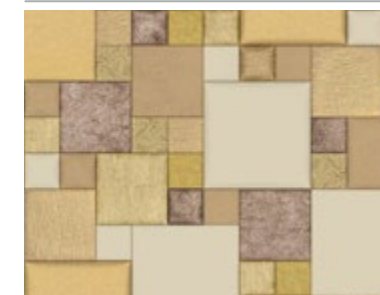
CITY



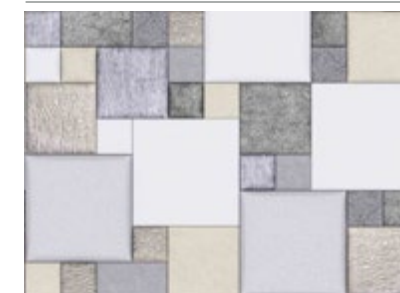
WATERNATURAL CHIC



PALETTE LUXURY IVORY



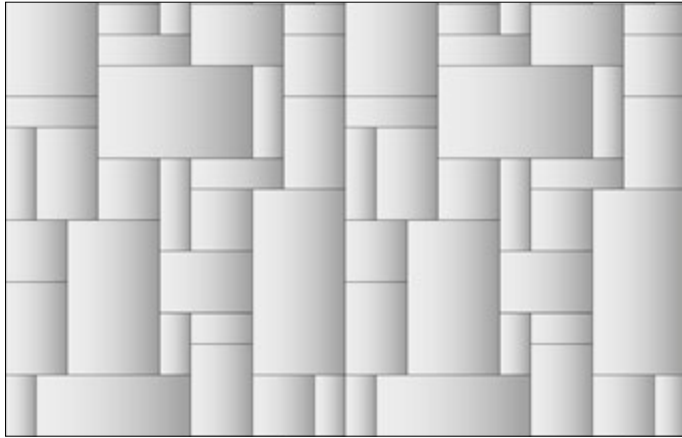
PALETTE LUXURY SILVER



Pattern 6

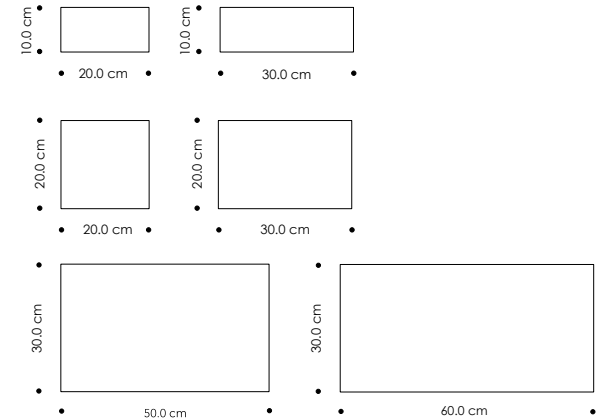
INDICE/
INDEX

LAYOUT A - BOMBATO/PADDED



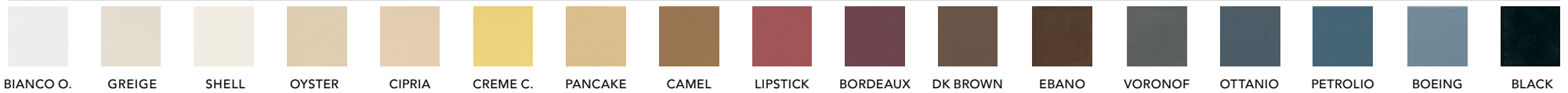
FORMATI / SIZES

10x20 cm / 3.94"x7.88"; 10x30 cm / 3.94"x11.81"; 20x20 cm / 7.88"x7.88";
30x50 cm / 11.81"x19.69"; 30x60 cm / 11.81"x23.62"

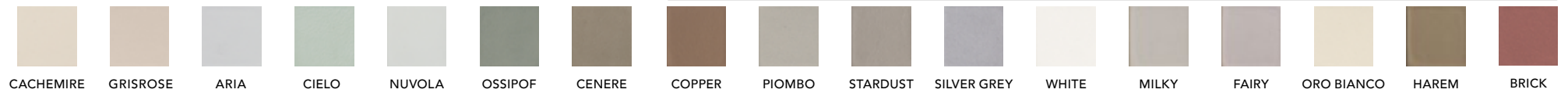


PELLI / LEATHERS

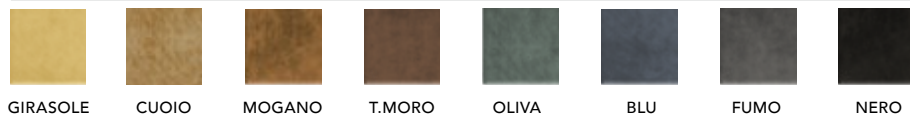
CITY



SATIN



SALAR

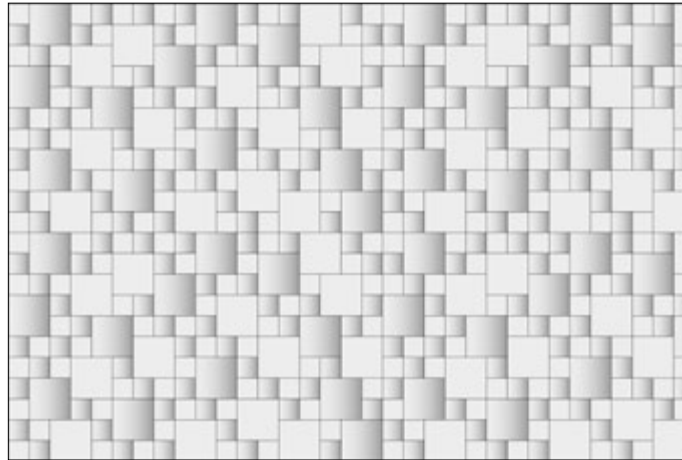


VELLUTO CHIC



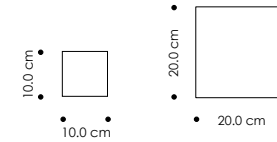
Pattern 8

INDICE/
INDEX



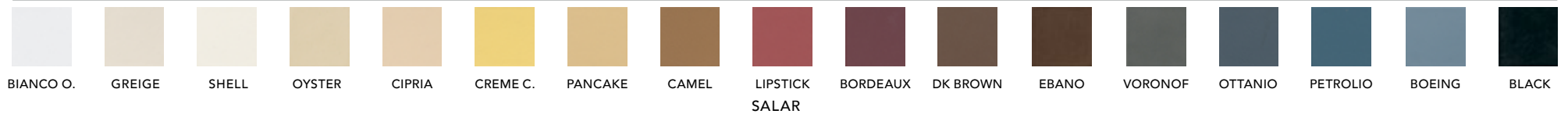
FORMATI / SIZES

10x10 cm / 3.94"x3.94"; 20x20 cm / 7.88"x7.88"



PELLI / LEATHERS

CITY



SALAR



WATERSUEDE CHIC

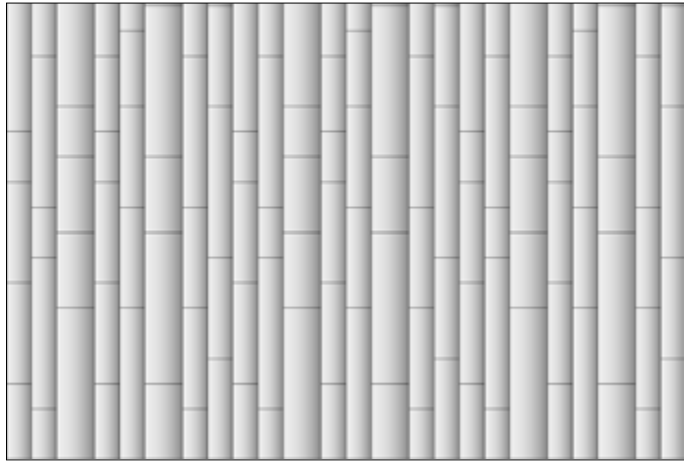


CIPRIA



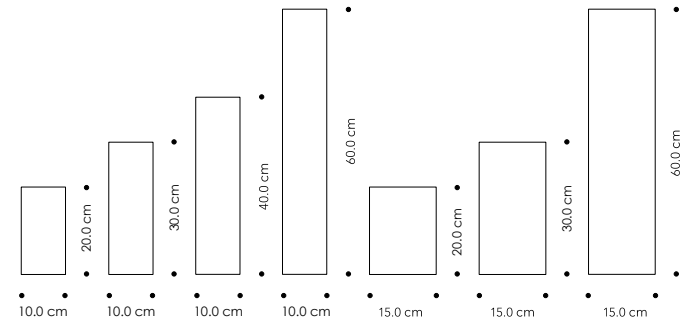
Pattern 9

INDICE/
INDEX



FORMATI / SIZES

10x20 cm / 3.94"x7.88"; 10x30 cm / 3.94"x11.81"; 10x40 cm / 3.94"x15.76";
10x60 cm / 3.94"x23.62"; 15x20 cm / 5.91"x7.88"; 15x30 cm / 5.91"x11.81";
15x60 cm / 5.91"x 23.62"



PELLI / LEATHERS

CITY



WATERNATURAL CHIC

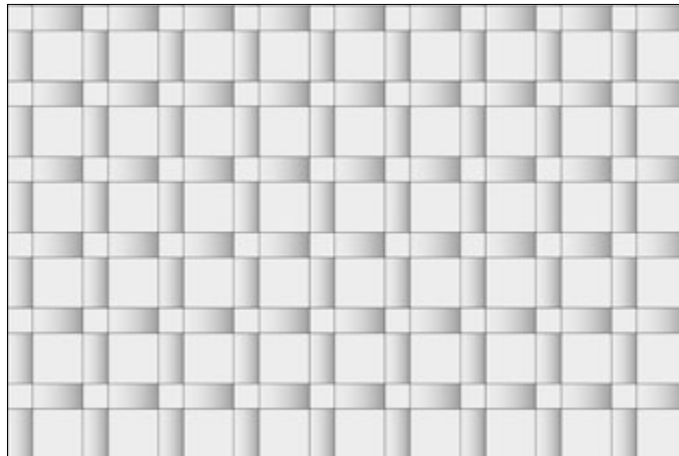
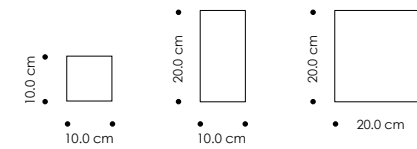


Pattern 12

 INDICE/
INDEX

LAYOUT A - PIANO-BOMBATO/FLAT-PADDED

FORMATI / SIZES

 10x10 cm / 3.94"x3.94"; 10x20 cm / 3.94"x7.88";
20x20 cm / 7.88"x7.88"

PELLI / LEATHERS
CITY


BIANCO O. GREIGE SHELL OYSTER CIPRIA CREME C. PANCAKE CAMEL LIPSTICK BORDEAUX DK BROWN EBANO



CACHEMIRE GRISROSE ARIA CIELO NUVOLA OSSIPOF CENERE VORONOF OTTANIO PETROLIO BOEING BLACK

SATIN


COPPER PIOMBO STARDUST SILVER GREY WHITE SATIN MILKY FAIRY ORO BIANCO HAREM BRICK

Pezzara Rug

INDICE/
INDEX

FORMATI / SIZES

125 x 300 cm / 49.21" x 118.11"



240 x 300 cm / 94.48" x 118.11"



ESEMPIO DI BORDO IN PELLE
EXAMPLE OF LEATHER EDGING



ESEMPIO DI BORDO IN RODEO
EXAMPLE OF RODEO EDGING



ESEMPIO DI BORDO RICAMATO
EXAMPLE OF EMBROIDERED EDGING

Cuscini ricamo

INDICE/
INDEX

RICAMI / EMBROIDERY



AZTECO



DAISY



GRAPHIC SOUND



RANELLA

PELLI / LEATHERS

WATERNATURAL CHIC



GREIGE

IVORY

PEARL

SLATE

DARK ASH

CREAM

studioart

Via Lungochiampo, 125
36054 Montebello Vicentino (VI) — Italia

T +39 0444 453745
info@studioart.it
www.studioart.it



THANKS TO

4P1B
AEVINTIRI
ALBERTO TONNI
ALTAI
AMINI
ANTES DESIGN
ARCAHORN
ARTEMIDE
B&B
BADARI
BLACK TIE
BOFFI
BOTTEGA VIGNOLI DAL 1976
CASARIALTO DI CATHERINE URBAN
CASSINA
CC TAPIS
CECCOTTI COLLEZIONI
CLAN MILANO
COTTO D'ESTE
CURIOSITÀ HOME
DANESE
DAVIDE AQUINI
DE VECCHI MILANO 1935
DIQUIGIOVANNI IL BAGNO
ELLEDDUE FURNITURE&PROJECTS
F F E R R O N E
FABBIAN
FATTO AD ARTE
FIAMMETTAV HOME COLLECTION
FLEXFORM
FOSCARINI
FRAG
FRITZ HANSEN
GILAB
GALLOTTI&RADICE
GERVASONI
GHIDINI 1961
GIANLUCA PACCHIONI
GIOBAGNARA
GIOPAGANI
GIORGETTI
GLASS ITALIA
GUBI
HENGE
HENRY DEAN
IL FANALE GROUP
ILLULIAN
JANE CHURCHILL
JCP UNIVERSE
KASHTALL
KN INDUSTRIE
KUNDALINI
L'ABBATE
LAURAMERONI DESIGN COLLECTION

LEA CERAMICHE
LETTI&CO
LEUCOS
LISTONE GIORDANO
LIVING DIVANI
LONGHI
L'OPIFICIO FABRICS AND VELVETS
MALFATTI ZORZAN
MANERBA
MANUEL CANOVAS
MARAZZI
MARTA SALA ÉDITIONS
MARTIN HUXFORD STUDIO
MASON EDITIONS
MAURO BOLOGNESI
MICHELE ARMELLINI
MIRABELLO CARRARA
MODO10
MOOD BY FLEXFORM
MOROSO
OAK
OFFICINA LUCE
OLUCE
OPERA CONTEMPORARY
PENTA
PIANCA
PLINIO IL GIOVANE

POLIFORM
PORTA ROMANA
PORTEGO
POTOCO
POULSEN
PRANDINA
RADICI CONTRACT
RINO GREGGIO ARGENTERIE
RUBELLI CASA
SALVIATI
SCANDOLA MARMI
SHÂKE
SILVIO MONDINO STUDIO
SITAP CARPET COUTURE ITALIA
SOCIETY LIMONTA
SOMMA 1867
STUDIO DIMORE COLLECTION
TACCHINI
TATIANA PUPPO
TATO
THE GALLERY - BRUSSELS
VISIONNAIRE
ZANOTTA
ZP STUDIO
ZUFFELLATO ARREDAMENTI

CREDITS

GRAPHIC DESIGN
Ottodesign

3D IMAGES
Real Render
Truetopia

STYLING
Michele Pasini
Beatrice Rossetti assisted by Wilson Polegato
Bruno Tarsia Studio

PHOTOGRAPHY
Michel Bousquet
Matteo Castagna
Piero Gemelli
Paolo Veciani

DIGITAL & PRODUCTION ASSISTANT
Paola Pansini
Gianfranco Longu
Serena Groppo